



SOLZAIMA







14	BACKBOILER FIRES (PELLETS)	Atlantic
15-18	HYDRO STOVES (PELLETS)	Hydro stoves 12 kw Hydro stoves 17 kw Hydro stoves 23 kw
19	COMPACTS (PELLETS)	SZM ECO C 12 / 18 / 24 kW
20-21	AUTOMATIC BOILERS (PELLETS)	SZM A PLUS 16 / 24 / 32 kW SZM A 18 / 24 / 30 kW
24-26	BACKBOILER FIRES (WOOD)	Zaima Eco Ecofogo Eco Mytho Eco / Mytho Eco PV Acqua Eco / Aqua Eco PV
27	W PLUS BOILERS (WOOD)	SZM W PLUS 25 / 30 kW SZM W PLUS 35 / 40 kW



32	INSERTS (PELLETS)	Earth / Fire / Wind
33-37	STOVES (PELLETS)	Stoves 6 / 8 / 10 kW
38-39	AIRTIGHT STOVES (PELLETS)	E100 / E100 R Up Everest / Everest Round
40-43	CANALIZABLE STOVES (PELLETS)	Nevada Amazon Stoves 12 KW
46-47	MONOBLOCS (WOOD)	Trevi 700 / 850 / 1100
48-50	INSERTS (WOOD)	Cast iron front inserts Glass door with and without ventilation Steel door with and without Ventilation
51-53	STOVES (WOOD)	K4 / M1 M12F Back Box / Back Box Slim M20 Tek

45 YEARS OF HISTORY

01

HOW IT ALL BEGAN

Founded in Belazaima do Chão in 1978, Solzaima started producing wood inserts. The factory presented an industrial area of 2,000 m². This type of product was already mature in Europe, but did not exist in Portugal. We were the pioneers in launching this product in our domestic market. As the economic rationale for this type of equipment was very strong (consumes around 8 times less wood than a traditional fireplace), the product was very successful. Over the years, we managed to find a network of installation partners with national coverage, which helped us become the market leader.



1978



02

QUALITY AND ENVIRONMENTAL CERTIFICATION

In this year, we conducted the first factory restructuring. The company now presented an industrial area of 5,000 m². We invested in ISO9001 and 14001 certification. Our products have always stood out for their quality, which begins with the choice of raw materials, goes through a rigorous production process and ends with the guarantee of the most relevant international certifications, ensuring excellence. Today we rely on several certifications.



2000



03

PELLETS, ACADEMY AND EXPORT MARKETS

During this period, we modernised our facilities, that now presented an industrial area of 10,000 m². We also developed a new corporate image that lasts to this day, our Solzaima forest. It was in 2011 that we launched the first pellet equipment, a great challenge. Today we have hundreds pellet models in our range and a growing demand due to the autonomy and comfort that this type of product provides. We have launched a new laboratory where we test all our models to ensure that they meet the highest quality standards, thus guaranteeing excellence. In the years that followed we made great strides - we opened the Solzaima Academy, where we train all our professionals, and also launched the export project that opened us the doors to the world.



2010



04

NEW MANUFACTURING UNIT

As a result of the growth and consolidation of the brand in various markets, it became urgent to invest in a new factory unit with an industrial area of 23,000 m². An investment of 13 million euros that reflected the modernisation and improvement of the processes, in order to make manufacturing more efficient and with better quality. To do so, we invested in a new non-polluting state-of-the-art painting process, automatic laser cutting machines and welding robots. We have installed 1,509 photovoltaic solar panels to produce electricity from the sun to be consumed by the building, allowing for a reduction of 390 tonnes of CO₂ emissions per year. We also guarantee that the energy used in the factory comes 100% from renewable energies.



2020



SOLZAIMA'S COMMITMENT



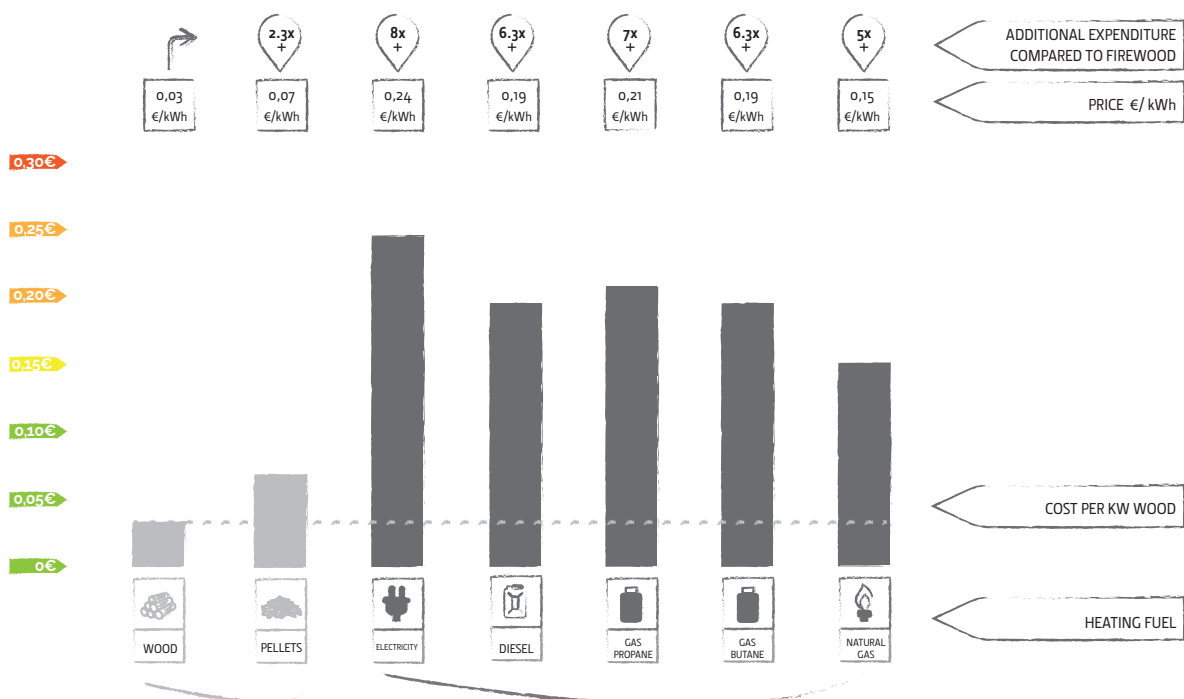
SOLZAIMA AND SUSTAINABILITY

It is in this context that Solzaima conceives and designs equipment powered by biomass as a primary source of energy. It is our contribution to the planet's sustainability - an economically viable and environmentally friendly alternative, safeguarding good environmental management practices. To achieve this, Solzaima seeks to know and study the national forest park, responding efficiently to energy demands, always taking care to safeguard biodiversity and natural wealth, essential to the planet's quality of life.

ECONOMY

Wood and pellets are today the most economical source of fuel for heating a home, which allows the investment in equipment to be paid off in a very short time. The following figure shows the differences in cost per kWh between the various fuels for heating, taking the cost per kWh of firewood as a reference. We can easily see the savings obtained when we use biomass (wood or pellets) instead of other forms of fuel for heating.

BIOMASS THE MOST ECONOMIC WAY TO HEAT YOUR HOME



(*) Prices calculated on the basis of portuguese market values in May 2023.

WHAT IS ECODESIGN

The new legislation, approved in Europe in 2016 and applied into force in 2022, means that all wood and pellet appliances have to meet new criteria, namely:

(*)	Wood	Pellets
NoX	<200 mg/m ³	<200 mg/m ³
COV	<120 mg/m ³	<60 mg/m ³
Particles	<40 mg/m ³	<20 mg/m ³
CO	<1500 mg/m ³	<300 mg/m ³
Seasonal Efficiency	>65%	>79%

(*) Requirements of the new standards EN 16510

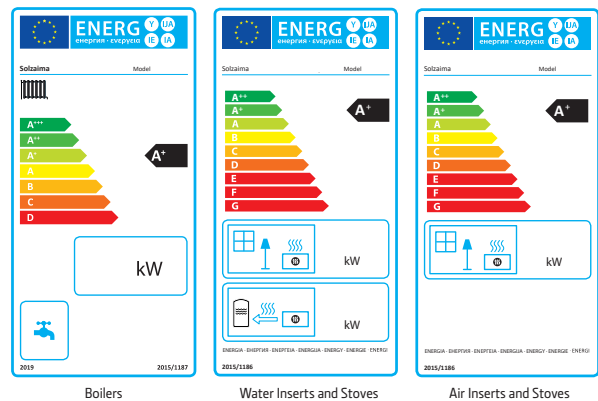
THE BENEFITS OF ECODESIGN

Our product range offers high levels of efficiency and control of the air circulation inside the stove. We offer products that are emissions free and produce thermal energy inside the house in a renewable way. All these new models are equipped with the possibility of channelling air from outside the home. In short, these units will burn beautifully, efficiently and with greater energy savings.

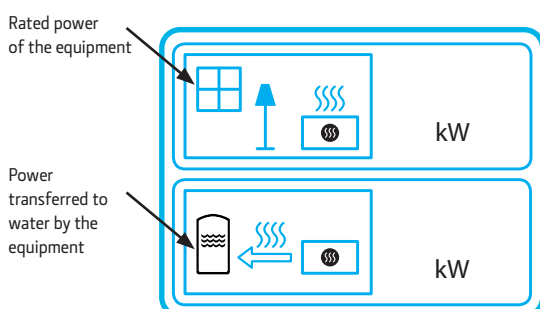


ENERGY EFFICIENCY LABELS

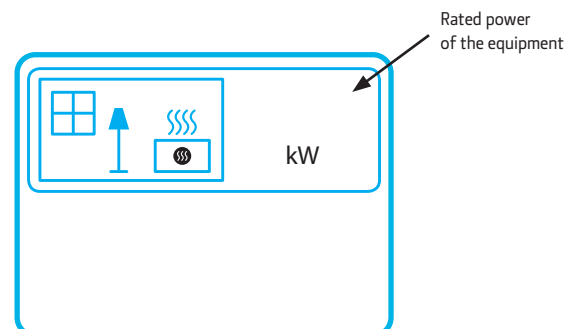
Energy efficiency labels indicate the rating of an appliance according to its energy consumption on a scale from A+++ to D for boilers and A++ to G for other appliances. "A" (green) corresponds to the most efficient appliances and "D" or "G" (red) to the least efficient. These labels allow consumers to choose products which consume less energy and thus save money. Solzaima's commitment to equipment efficiency means that all our products are classified in the A+ efficiency class. This way, you will be able to produce the same amount of energy with much less wood or pellets.



INFORMATION ON ENERGY EFFICIENCY LABELS OF WATER MODELS



INFORMATION ON ENERGY EFFICIENCY LABELS OF AIR MODELS



WEBSITE



WWW.SOLZAIMA.COM

Our website will help you every step of the way, from selecting the equipment that best suits your home to its maintenance, because a Solzaima is for life.



Follow the latest sector news.



Find out more about our carbon footprint.



Check out new features, images, technical files, performance and CE declarations, instruction manuals, ecodesign certificates and energy efficiency labels of all our products.



Create service requests that integrate automatically with our system, being prioritized over requests made by other means. You will also receive an sms with the scheduling details.



Use our interactive choice guide to find out which heating solution is the best for your home.



Follow the status of the service request in real time. In the end, you can consult and download the intervention report.



Use our simulator to see how our models would look like in your home.



Buy spare parts for your equipment.



MYCLUB.SOLZAIMA.COM

If you are a professional in the biomass sector, we have developed a new website just for you! You can check out stocks, buy spare parts, create service requests and even win prizes. Don't miss out on this opportunity and register now!



SEARCH FOR THESE SYMBOLS THROUGHOUT THE CATALOGUE



Remote control included

The remote control allows you to switch your unit on and off, as well as adjust the temperature and make various settings. Everything from a simple click.



Smartphone control (optional)

The equipment can be controlled through a smartphone, requiring only an application and a Solzaima Wi-Fi kit. This technology allows you to control your equipment from anywhere in the world.



Programmable Display

This touch screen display is the most complete solution for handling your equipment, allowing you to check and set various options, such as fume temperature, operating hours, thermostat chrono, among many others.



Fan

The fans used are high performance tangential fans and guarantee good heat distribution and precious silence in use.



Easy to install covers

Covers are fitted for easy application and removal.



Easy maintenance

Easy access to all components for maintenance.



Door with glass cleaning system

The circulation of air inside the door ensures that the windows are always clean during operation.



Easy cleaning of the heat exchanger/turbulators

Easy access to clean the heat exchanger/turbulators, which allows to keep the heat transfer efficiency as constant as possible.



Humidifier

Stainless steel container where you can put water that will evaporate and humidify the air.



Temperature management with ambient probe

Control and regulation of the ambient temperature where the unit is installed.



Possible to connect to an extern thermostat

The device is already prepared for easy installation of an extern thermostat.



Airflow control

The air mass sensor automatically increases or reduces the amount of air, ensuring an optimal combustion. In case of poor extraction, your equipment goes into safety mode.



Outdoor air connection

The combustion air is collected outside the house. It is especially efficient in highly insulated houses, ensuring that the air quality of your home is not impaired.



Firewood Fuel

Only use firewood with a humidity content lower than 20%.



Pellet Fuel

Use only pellets certified to EN 14961-2 grade A1 with a diameter of 6 mm and a length that can range from 10 to 30 mm.



Triple automatic cleaning system

Automatic cleaning system for the burner, turbulators and plate.



Vertical or horizontal smoke output

The equipment can be installed with the smoke outlet horizontally or vertically.



Auxiliary combustion fan



Adaptation to coaxial chimney system

Easy adaptation to a coaxial chimney system.



Piped air

The equipment allows the distribution of warm air to other rooms.



Water setpoint

Control and management of water temperature in heating systems and domestic hot water plants.



Tight

Combustion air is always drawn in from outside the house when the coaxial smoke exhaust tube is used.



Highly temperature-resistant materials

The components in direct contact with fire, are manufactured mostly in vermiculite, to ensure greater durability of your equipment.



Expansion vessel

Devices designed to compensate for the increase in water volume caused by the rise in temperature, either in heating systems or in domestic hot water production systems.



Double Combustion

The dual combustion ensures a perfect combustion and a beautiful flame, which you will love to have in your living room. The air used to burn the firewood is fully controlled and injected into the areas where you need it and when you need it.

CENTRAL HEATING

Zaima Eco



Hidro 12 kW- Himalaia Collection



SZM A Plus 24



Atlantic

Hidro 12 kW- Fuji Collection



Acqua Eco



SZM ECO C 24



SZM W Plus 25

PELLETS CENTRAL HEATING

WHAT ARE THE BENEFITS OF CHOOSING A SOLZAIMA WATER PELLET SOLUTION FOR YOUR HOME?

The water central heating equipments are the ideal solution for the comfort of your home. They can work autonomously or interconnected with the remaining heating systems. They are perfectly complementary and become the most economical solution for those who wish to replace or complement the following forms of energy:

(a) solar thermal panel - in this case, the complementarity is perfect. Solar panels work well during the day and in summer, for the heating of sanitary waters. The central water heating equipment usually works in winter and night to heat your whole house and helps the solar panels to heat the sanitary water when the sun is not available.

b) Diesel central heating boiler - in this situation, when you switch on your central heating appliance, a thermostat will automatically switch off your boiler, which will bring you high fuel savings during peak hours. This solution allows you to pay for water central heating equipment in 18 months, and the environment thanks you.

c) Gas or other forms of heating - the interconnection with the central heating system works in the same way as the diesel boiler and allows you considerable energy savings, a better environment in your home and minimises environmental damage, since the water central heating stove is a CO₂-neutral form of heating.

Pellets are the most economical fuel on the market after wood and are a clean and sustainable source of energy. They also provide greater autonomy, efficiency and ease of use.



SMARTPHONE CONTROL

The equipment can be controlled by smartphone. You just need to install the 4Heat application and purchase a Solzaima Wi-Fi kit. This technology allows you to control your equipment from anywhere in the world. In the SZM A Plus boilers this technology is already incorporated as standard.



EASY CLEANING

Easy access to the turbulator's cleaning system, which allows the heat transfer efficiency to be kept as constant as possible. In the case of the automatic boilers (SZM A and SZM A Plus), this cleaning is performed automatically with the aid of an electric motor.



WATER TEMPERATURE MANAGEMENT

The Hidro, Atlantic and Compact (SZM C) models allow to control and manage the setpoint temperature of the water for heating. The automatic boilers (SZM A and SZM A Plus) additionally act on the set temperature of the domestic hot water (DHW) and the inertia tank.



AJUSTABLE DISPLAY

The multilingual touch display allows you to adjust the power variables (manual or automatic), water temperature, pellet dosage, smoke extractor speed and also to program an internal timer to activate and deactivate the machine at set times in a simple and convenient way.



CONNECTABLE WITH OTHER DEVICES

The stoves are prepared to be easily connected with an external thermostat for temperature control.



SAFE INSTALLATION

The Hidro and Compact models come equipped with a complete hydraulic kit, water pressure sensor (2), 3 bar safety valve (3), circulating pump (4) and expansion vessel (5). The Atlantic model and the automatic boilers (SZM A and SZM A Plus) also include an anti-condensation return valve (1).



COMBUSTION OPTIMISATION

The automatic boilers are equipped with this device which measures the amount of air entering the equipment. The electronic card increases or decreases the extractor speed and the consequent quantity of air in order to achieve the best combustion performance.



REFUEL ALERT

The automatic boilers (SZM A and SZM A Plus) and the Atlantic model come equipped with this sensor that can detect when the tank is getting empty, generating an alert to proceed with refilling.



GLASS ALWAYS CLEAN

The air circulation in an exclusive channel that directs the air towards the glass contribute to keep the glass clean at all times during the operation of the appliance.

PELLETS CENTRAL HEATING

BACKBOILER FIRES (PELLETS)



The Atlantic model is available with a mirror or nightview sliding door and can be acquired with left or right opening. The high-capacity tank (45 kg) features a pellet level sensor that detects when the tank is running low, generating an alert for refilling, which should be done through the front drawer. This appliance presents an easy access for cleaning the turbulators, allowing the heat transfer efficiency to remain as constant as possible. For even more thorough cleaning and maintenance, you can also extract the equipment.

ATLANTIC (Left Opening) A+

HOPPER AUTONOMY MIN-MAX (h)	8,8 - 40,9
HOPPER CAPACITY (kg)	45
REDUCED / NOMINAL POWER (kW)	5,1 - 22,1
REDUCED / NOMINAL POWER WATER (kW)	4,3-18,8
REDUCED / NOMINAL EFFICIENCY (%)	93,8-89,2
HEATING VOLUME (m ³)	502
CONSUMPTION (kg/h)	1,1-5,1
CHIMNEY DIAMETER (mm)	100
HEIGHT (mm)	1333
WIDTH (mm)	668
DEPTH (mm)	752
WEIGHT (kg)	201
WATER VOLUME (L)	22
PRESSURE (Bar)	3
MAXIMUM NOISE LEVEL (dB)	49,1

COLOURS



ATLANTIC (Right Opening) A+

HOPPER AUTONOMY MIN-MAX (h)	8,8 - 40,9
HOPPER CAPACITY (kg)	45
REDUCED / NOMINAL POWER (kW)	5,1 - 22,1
REDUCED / NOMINAL POWER WATER (kW)	4,3-18,8
REDUCED / NOMINAL EFFICIENCY (%)	93,8-89,2
HEATING VOLUME (m ³)	502
CONSUMPTION (kg/h)	1,1-5,1
CHIMNEY DIAMETER (mm)	100
HEIGHT (mm)	1333
WIDTH (mm)	668
DEPTH (mm)	752
WEIGHT (kg)	201
WATER VOLUME (L)	22
PRESSURE (Bar)	3
MAXIMUM NOISE LEVEL (dB)	49,1

COLOURS



OPTIONALS ATLANTIC (PELLETS)



Description

Wi-Fi Kit + (Columbus)



Description

Wi-Fi Kit



Description

Ventilation Grill



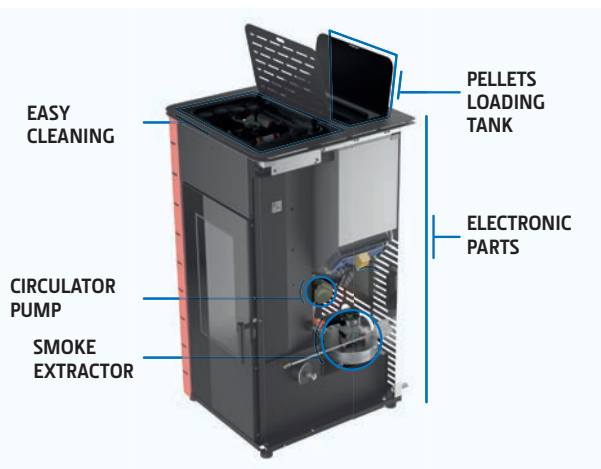
Description

Display Holder (*)

(*) Not applicable to Columbus electronics.



HYDRO STOVES (PELLETS)



These models feature a double cleaning system: self-cleaning of the burner and manual cleaning of the smoke circuit. The electronics and electric parts are completely separated from the hydraulic, for better robustness and reliability. In addition to the new watertight combustion chamber, that increases combustion efficiency, it also features good thermodynamic performance by using higher heating temperatures.

HIDRO 12 KW Fuji Collection

A+



HOPPER AUTONOMY MIN-MAX (h)	10,0 - 27,3
HOPPER CAPACITY (kg)	30
REDUCED / NOMINAL POWER (kW)	5,0 - 13,0
REDUCED / NOMINAL POWER WATER (kW)	3,8-11,5
REDUCED / NOMINAL EFFICIENCY (%)	95,0-92,0
HEATING VOLUME (m ³)	295
CONSUMPTION (kg/h)	1,1-3,0
CHIMNEY DIAMETER (mm)	80
HEIGHT (mm)	1110
WIDTH (mm)	617
DEPTH (mm)	707
WEIGHT (kg)	185
WATER VOLUME (L)	19
PRESSURE (Bar)	3
MAXIMUM NOISE LEVEL (dB)	49,1



HIDRO 12 KW Fuji Collection - Glass Door

A+



HOPPER AUTONOMY MIN-MAX (h)	10,0 - 27,3
HOPPER CAPACITY (kg)	30
REDUCED / NOMINAL POWER (kW)	5,0 - 13,0
REDUCED / NOMINAL POWER WATER (kW)	3,8-11,5
REDUCED / NOMINAL EFFICIENCY (%)	95,0-92,0
HEATING VOLUME (m ³)	295
CONSUMPTION (kg/h)	1,1-3,0
CHIMNEY DIAMETER (mm)	80
HEIGHT (mm)	1110
WIDTH (mm)	617
DEPTH (mm)	707
WEIGHT (kg)	185
WATER VOLUME (L)	19
PRESSURE (Bar)	3
MAXIMUM NOISE LEVEL (dB)	49,1



HIDRO 12 KW Himalaia Collection

A+



HOPPER AUTONOMY MIN-MAX (h)	10,0 - 27,3
HOPPER CAPACITY (kg)	30
REDUCED / NOMINAL POWER (kW)	5,0 - 13,0
REDUCED / NOMINAL POWER WATER (kW)	3,8-11,5
REDUCED / NOMINAL EFFICIENCY (%)	95,0-92,0
HEATING VOLUME (m ³)	295
CONSUMPTION (kg/h)	1,1-3,0
CHIMNEY DIAMETER (mm)	80
HEIGHT (mm)	1110
WIDTH (mm)	617
DEPTH (mm)	707
WEIGHT (kg)	185
WATER VOLUME (L)	19
PRESSURE (Bar)	3
MAXIMUM NOISE LEVEL (dB)	49,1



HIDRO 12 KW Himalaia Collection - Glass Door

A+



HOPPER AUTONOMY MIN-MAX (h)	10,0 - 27,3
HOPPER CAPACITY (kg)	30
REDUCED / NOMINAL POWER (kW)	5,0 - 13,0
REDUCED / NOMINAL POWER WATER (kW)	3,8-11,5
REDUCED / NOMINAL EFFICIENCY (%)	95,0-92,0
HEATING VOLUME (m ³)	295
CONSUMPTION (kg/h)	1,1-3,0
CHIMNEY DIAMETER (mm)	80
HEIGHT (mm)	1110
WIDTH (mm)	617
DEPTH (mm)	707
WEIGHT (kg)	185
WATER VOLUME (L)	19
PRESSURE (Bar)	3
MAXIMUM NOISE LEVEL (dB)	49,1



COLOURS



WHITE

BORDEAUX

BLACK

COLOURS



WHITE

BORDEAUX

BLACK

PELLETS CENTRAL HEATING

HYDRO STOVES (PELLETS)

HIDRO 17 KW Fuji Collection

A+



HOPPER AUTONOMY MIN-MAX (h)	9,3 - 32,7
HOPPER CAPACITY (kg)	36
REDUCED / NOMINAL POWER (kW)	5,1 - 16,7
REDUCED / NOMINAL POWER WATER (kW)	4,3-14,5
REDUCED / NOMINAL EFFICIENCY (%)	93,8-90,9
HEATING VOLUME (m ³)	380
CONSUMPTION (kg/h)	1,1-3,9
CHIMNEY DIAMETER (mm)	100
HEIGHT (mm)	1192
WIDTH (mm)	626
DEPTH (mm)	710
WEIGHT (kg)	216
WATER VOLUME (L)	22
PRESSURE (Bar)	3
MAXIMUM NOISE LEVEL (dB)	49,1



HIDRO 17 KW Fuji Collection - Glass Door

A+



HOPPER AUTONOMY MIN-MAX (h)	9,3 - 32,7
HOPPER CAPACITY (kg)	36
REDUCED / NOMINAL POWER (kW)	5,1 - 16,7
REDUCED / NOMINAL POWER WATER (kW)	4,3-14,5
REDUCED / NOMINAL EFFICIENCY (%)	93,8-90,9
HEATING VOLUME (m ³)	380
CONSUMPTION (kg/h)	1,1-3,9
CHIMNEY DIAMETER (mm)	100
HEIGHT (mm)	1192
WIDTH (mm)	626
DEPTH (mm)	710
WEIGHT (kg)	216
WATER VOLUME (L)	22
PRESSURE (Bar)	3
MAXIMUM NOISE LEVEL (dB)	49,1



HIDRO 17 KW Himalaia Collection

A+



HOPPER AUTONOMY MIN-MAX (h)	9,3 - 32,7
HOPPER CAPACITY (kg)	36
REDUCED / NOMINAL POWER (kW)	5,1 - 16,7
REDUCED / NOMINAL POWER WATER (kW)	4,3-14,5
REDUCED / NOMINAL EFFICIENCY (%)	93,8-90,9
HEATING VOLUME (m ³)	380
CONSUMPTION (kg/h)	1,1-3,9
CHIMNEY DIAMETER (mm)	100
HEIGHT (mm)	1192
WIDTH (mm)	626
DEPTH (mm)	710
WEIGHT (kg)	214
WATER VOLUME (L)	22
PRESSURE (Bar)	3
MAXIMUM NOISE LEVEL (dB)	49,1



HIDRO 17 KW Himalaia Collection - Glass Door

A+



HOPPER AUTONOMY MIN-MAX (h)	9,3 - 32,7
HOPPER CAPACITY (kg)	36
REDUCED / NOMINAL POWER (kW)	5,1 - 16,7
REDUCED / NOMINAL POWER WATER (kW)	4,3-14,5
REDUCED / NOMINAL EFFICIENCY (%)	93,8-90,9
HEATING VOLUME (m ³)	380
CONSUMPTION (kg/h)	1,1-3,9
CHIMNEY DIAMETER (mm)	100
HEIGHT (mm)	1192
WIDTH (mm)	626
DEPTH (mm)	710
WEIGHT (kg)	214
WATER VOLUME (L)	22
PRESSURE (Bar)	3
MAXIMUM NOISE LEVEL (dB)	49,1



COLOURS



WHITE BORDEAUX BLACK

COLOURS



WHITE BORDEAUX BLACK

HIDRO 17 KW Douro Collection

A+



HOPPER AUTONOMY MIN-MAX (h)	9,3 - 32,7
HOPPER CAPACITY (kg)	36
REDUCED / NOMINAL POWER (kW)	5,1 - 16,7
REDUCED / NOMINAL POWER WATER (kW)	4,3-14,5
REDUCED / NOMINAL EFFICIENCY (%)	93,8-90,9
HEATING VOLUME (m ³)	380
CONSUMPTION (kg/h)	1,1-3,9
CHIMNEY DIAMETER (mm)	100
HEIGHT (mm)	1192
WIDTH (mm)	595
DEPTH (mm)	710
WEIGHT (kg)	202
WATER VOLUME (L)	22
PRESSURE (Bar)	3
MAXIMUM NOISE LEVEL (dB)	49,1



HIDRO 17 KW Douro Collection - Glass Door

A+



HOPPER AUTONOMY MIN-MAX (h)	9,3 - 32,7
HOPPER CAPACITY (kg)	36
REDUCED / NOMINAL POWER (kW)	5,1 - 16,7
REDUCED / NOMINAL POWER WATER (kW)	4,3-14,5
REDUCED / NOMINAL EFFICIENCY (%)	93,8-90,9
HEATING VOLUME (m ³)	380
CONSUMPTION (kg/h)	1,1-3,9
CHIMNEY DIAMETER (mm)	100
HEIGHT (mm)	1192
WIDTH (mm)	595
DEPTH (mm)	710
WEIGHT (kg)	202
WATER VOLUME (L)	22
PRESSURE (Bar)	3
MAXIMUM NOISE LEVEL (dB)	49,1



COLOURS



WHITE BORDEAUX BLACK

COLOURS



WHITE BORDEAUX BLACK

HYDRO STOVES (PELLETS)




APPROVED PRODUCT








**HIDRO 17 KW
K2 Collection** A+ →

HOPPER AUTONOMY MIN-MAX (h)	9,3 - 32,7
HOPPER CAPACITY (kg)	36
REDUCED / NOMINAL POWER (kW)	5,1 - 16,7
REDUCED / NOMINAL POWER WATER (kW)	4,3-14,5
REDUCED / NOMINAL EFFICIENCY (%)	93,8-90,9
HEATING VOLUME (m ³)	380
CONSUMPTION (kg/h)	1,1-3,9
CHIMNEY DIAMETER (mm)	100
HEIGHT (mm)	1192
WIDTH (mm)	704
DEPTH (mm)	710
WEIGHT (kg)	214
WATER VOLUME (L)	22
PRESSURE (Bar)	3
MAXIMUM NOISE LEVEL (dB)	49,1












COLOURS



WHITE BORDEAUX BLACK




APPROVED PRODUCT








**HIDRO 17 KW
K2 Collection - Glass Door** A+ →

HOPPER AUTONOMY MIN-MAX (h)	9,3 - 32,7
HOPPER CAPACITY (kg)	36
REDUCED / NOMINAL POWER (kW)	5,1 - 16,7
REDUCED / NOMINAL POWER WATER (kW)	4,3-14,5
REDUCED / NOMINAL EFFICIENCY (%)	93,8-90,9
HEATING VOLUME (m ³)	380
CONSUMPTION (kg/h)	1,1-3,9
CHIMNEY DIAMETER (mm)	100
HEIGHT (mm)	1192
WIDTH (mm)	704
DEPTH (mm)	710
WEIGHT (kg)	214
WATER VOLUME (L)	22
PRESSURE (Bar)	3
MAXIMUM NOISE LEVEL (dB)	49,1












COLOURS



WHITE BORDEAUX BLACK




APPROVED PRODUCT








**HIDRO 23 KW
Douro Collection** A+ →

HOPPER AUTONOMY MIN-MAX (h)	10,8 - 50,0
HOPPER CAPACITY (kg)	55
REDUCED / NOMINAL POWER (kW)	5,1 - 22,1
REDUCED / NOMINAL POWER WATER (kW)	4,3-18,8
REDUCED / NOMINAL EFFICIENCY (%)	93,8-89,2
HEATING VOLUME (m ³)	502
CONSUMPTION (kg/h)	1,1-5,1
CHIMNEY DIAMETER (mm)	100
HEIGHT (mm)	1255
WIDTH (mm)	663
DEPTH (mm)	767
WEIGHT (kg)	219
WATER VOLUME (L)	22
PRESSURE (Bar)	3
MAXIMUM NOISE LEVEL (dB)	49,1












COLOURS



WHITE BORDEAUX BLACK




APPROVED PRODUCT








**HIDRO 23 KW
Douro Collection - Glass Door** A+ →

HOPPER AUTONOMY MIN-MAX (h)	10,8 - 50,0
HOPPER CAPACITY (kg)	55
REDUCED / NOMINAL POWER (kW)	5,1 - 22,1
REDUCED / NOMINAL POWER WATER (kW)	4,3-18,8
REDUCED / NOMINAL EFFICIENCY (%)	93,8-89,2
HEATING VOLUME (m ³)	502
CONSUMPTION (kg/h)	1,1-5,1
CHIMNEY DIAMETER (mm)	100
HEIGHT (mm)	1255
WIDTH (mm)	663
DEPTH (mm)	767
WEIGHT (kg)	219
WATER VOLUME (L)	22
PRESSURE (Bar)	3
MAXIMUM NOISE LEVEL (dB)	49,1












COLOURS



WHITE BORDEAUX BLACK




APPROVED PRODUCT








**HIDRO 23 KW
Fuji Collection** A+ →

HOPPER AUTONOMY MIN-MAX (h)	10,8 - 50,0
HOPPER CAPACITY (kg)	55
REDUCED / NOMINAL POWER (kW)	5,1 - 22,1
REDUCED / NOMINAL POWER WATER (kW)	4,3-18,8
REDUCED / NOMINAL EFFICIENCY (%)	93,8-89,2
HEATING VOLUME (m ³)	502
CONSUMPTION (kg/h)	1,1-5,1
CHIMNEY DIAMETER (mm)	100
HEIGHT (mm)	1255
WIDTH (mm)	644
DEPTH (mm)	767
WEIGHT (kg)	237
WATER VOLUME (L)	22
PRESSURE (Bar)	3
MAXIMUM NOISE LEVEL (dB)	49,1












COLOURS



WHITE BORDEAUX BLACK




APPROVED PRODUCT








**HIDRO 23 KW
Fuji Collection - Glass Door** A+ →

HOPPER AUTONOMY MIN-MAX (h)	10,8 - 50,0
HOPPER CAPACITY (kg)	55
REDUCED / NOMINAL POWER (kW)	5,1 - 22,1
REDUCED / NOMINAL POWER WATER (kW)	4,3-18,8
REDUCED / NOMINAL EFFICIENCY (%)	93,8-89,2
HEATING VOLUME (m ³)	502
CONSUMPTION (kg/h)	1,1-5,1
CHIMNEY DIAMETER (mm)	100
HEIGHT (mm)	1255
WIDTH (mm)	644
DEPTH (mm)	767
WEIGHT (kg)	237
WATER VOLUME (L)	22
PRESSURE (Bar)	3
MAXIMUM NOISE LEVEL (dB)	49,1












COLOURS



WHITE BORDEAUX BLACK

PELLETS CENTRAL HEATING

HYDRO STOVES (PELLETS)








HOPPER AUTONOMY MIN-MAX (h)	10,8 - 50,0
HOPPER CAPACITY (kg)	55
REDUCED / NOMINAL POWER (kW)	5,1 - 22,1
REDUCED / NOMINAL POWER WATER (kW)	4,3-18,8
REDUCED / NOMINAL EFFICIENCY (%)	93,8-89,2
HEATING VOLUME (m ³)	502
CONSUMPTION (kg/h)	1,1-5,1
CHIMNEY DIAMETER (mm)	100
HEIGHT (mm)	1255
WIDTH (mm)	644
DEPTH (mm)	767
WEIGHT (kg)	234
WATER VOLUME (L)	22
PRESSURE (Bar)	3
MAXIMUM NOISE LEVEL (dB)	49,1



COLOURS









HOPPER AUTONOMY MIN-MAX (h)	10,8 - 50,0
HOPPER CAPACITY (kg)	55
REDUCED / NOMINAL POWER (kW)	5,1 - 22,1
REDUCED / NOMINAL POWER WATER (kW)	4,3-18,8
REDUCED / NOMINAL EFFICIENCY (%)	93,8-89,2
HEATING VOLUME (m ³)	502
CONSUMPTION (kg/h)	1,1-5,1
CHIMNEY DIAMETER (mm)	100
HEIGHT (mm)	1255
WIDTH (mm)	644
DEPTH (mm)	767
WEIGHT (kg)	234
WATER VOLUME (L)	22
PRESSURE (Bar)	3
MAXIMUM NOISE LEVEL (dB)	49,1



COLOURS









HOPPER AUTONOMY MIN-MAX (h)	10,8 - 50,0
HOPPER CAPACITY (kg)	55
REDUCED / NOMINAL POWER (kW)	5,1 - 22,1
REDUCED / NOMINAL POWER WATER (kW)	4,3-18,8
REDUCED / NOMINAL EFFICIENCY (%)	93,8-89,2
HEATING VOLUME (m ³)	502
CONSUMPTION (kg/h)	1,1-5,1
CHIMNEY DIAMETER (mm)	100
HEIGHT (mm)	1255
WIDTH (mm)	746
DEPTH (mm)	767
WEIGHT (kg)	234
WATER VOLUME (L)	22
PRESSURE (Bar)	3
MAXIMUM NOISE LEVEL (dB)	49,1



COLOURS









HOPPER AUTONOMY MIN-MAX (h)	10,8 - 50,0
HOPPER CAPACITY (kg)	55
REDUCED / NOMINAL POWER (kW)	5,1 - 22,1
REDUCED / NOMINAL POWER WATER (kW)	4,3-18,8
REDUCED / NOMINAL EFFICIENCY (%)	93,8-89,2
HEATING VOLUME (m ³)	502
CONSUMPTION (kg/h)	1,1-5,1
CHIMNEY DIAMETER (mm)	100
HEIGHT (mm)	1255
WIDTH (mm)	746
DEPTH (mm)	767
WEIGHT (kg)	234
WATER VOLUME (L)	22
PRESSURE (Bar)	3
MAXIMUM NOISE LEVEL (dB)	49,1



COLOURS



OPTIONALS HYDRO STOVES (PELLETS)



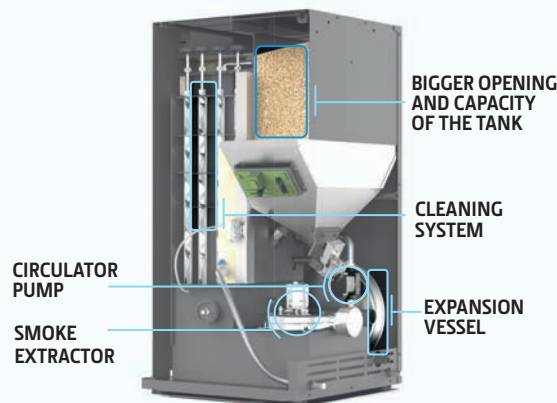
Description
Wi-Fi Kit + (Columbus)



Description
Wi-Fi Kit



COMPACTS (PELLETS)



These models feature a double cleaning system: self-cleaning of the burner and manual cleaning of the smoke system. It also offers a good thermodynamic performance with higher heating temperatures.

SZM ECO C 12

A+



HOPPER AUTONOMY MIN-MAX (h)	14,0 - 38,2
HOPPER CAPACITY (kg)	42
REDUCED / NOMINAL POWER (kW)	5,0 - 13,0
REDUCED / NOMINAL POWER WATER (kW)	3,8-11,5
REDUCED / NOMINAL EFFICIENCY (%)	95,0-92,0
HEATING VOLUME (m ³)	295
CONSUMPTION (kg/h)	1,1-3,0
CHIMNEY DIAMETER (mm)	100
HEIGHT (mm)	1210
WIDTH (mm)	620
DEPTH (mm)	700
WEIGHT (kg)	200
WATER VOLUME (L)	19
PRESSURE (Bar)	3
MAXIMUM NOISE LEVEL (dB)	49,1



SZM ECO C 18

A+



HOPPER AUTONOMY MIN-MAX (h)	17,3 - 51,4
HOPPER CAPACITY (kg)	72
REDUCED / NOMINAL POWER (kW)	6,3 - 18,0
REDUCED / NOMINAL POWER WATER (kW)	5,1-16,6
REDUCED / NOMINAL EFFICIENCY (%)	95,0-91,5
HEATING VOLUME (m ³)	409
CONSUMPTION (kg/h)	1,4-4,2
CHIMNEY DIAMETER (mm)	100
HEIGHT (mm)	1301
WIDTH (mm)	666
DEPTH (mm)	740
WEIGHT (kg)	230
WATER VOLUME (L)	22
PRESSURE (Bar)	3
MAXIMUM NOISE LEVEL (dB)	49,1



SZM ECO C 24

A+



HOPPER AUTONOMY MIN-MAX (h)	13,3 - 41,6
HOPPER CAPACITY (kg)	72
REDUCED / NOMINAL POWER (kW)	7,8 - 23,5
REDUCED / NOMINAL POWER WATER (kW)	6,7-22,2
REDUCED / NOMINAL EFFICIENCY (%)	95,0-91,0
HEATING VOLUME (m ³)	534
CONSUMPTION (kg/h)	1,7-5,4
CHIMNEY DIAMETER (mm)	100
HEIGHT (mm)	1301
WIDTH (mm)	666
DEPTH (mm)	740
WEIGHT (kg)	232
WATER VOLUME (L)	22
PRESSURE (Bar)	3
MAXIMUM NOISE LEVEL (dB)	49,1



OPTIONALS COMPACTS (PELLETS)



Description

Wi-Fi Kit + (Columbus)

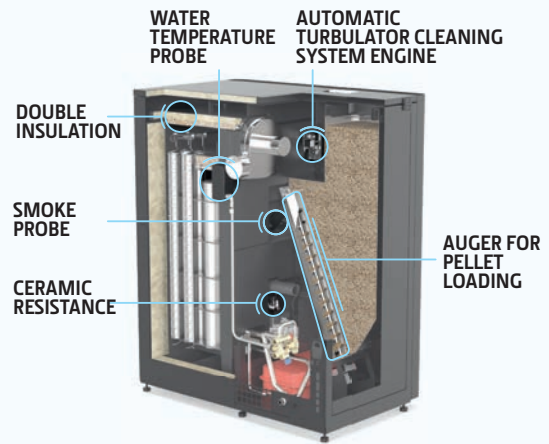


Description

Wi-Fi Kit

PELLETS CENTRAL HEATING

AUTOMATIC BOILERS SZM A PLUS (PELLETS)



The SZM A Plus boilers have a new, innovative and more efficient automatic cleaning system. The integrated silo, with a capacity of 150 kg on the 18 kW and 24 kW models and 180 kg on the 32 kW model, has a pellet level sensor which detects when the tank is running low, generating an alert to proceed with refilling. The airtight combustion chamber makes combustion more efficient. It comes with a complete hydraulic kit, a wi-fi kit that allows you to control your equipment using a smartphone and also a cable to connect it to the inertia tank. The electronics allow you to control four types of plug and play hydraulic plants.



SZM A PLUS 16 A+

HOPPER AUTONOMY MIN-MAX (h)	32,6 - 124,0
HOPPER CAPACITY (kg)	150
REDUCED / NOMINAL POWER WATER (kW)	4,5 -17,2
REDUCED / NOMINAL EFFICIENCY (%)	92,1-91,0
HEATING VOLUME (m ³)	391
CONSUMPTION (kg/h)	1,0-3,8
CHIMNEY DIAMETER (mm)	100
HEIGHT (mm)	1360
WIDTH (mm)	1213
DEPTH (mm)	700
WEIGHT (kg)	413
WATER VOLUME (L)	50
PRESSURE (Bar)	3,0
CHIMNEY DRAUGHT REQUIRED (Pa)	12
GAS TEMPERATURE (°C)	63,2-104,1
EEL	123
MAXIMUM NOISE LEVEL (dB)	54



APPROVED PRODUCT






SZM A PLUS 24 A+

HOPPER AUTONOMY MIN-MAX (h)	23,4 - 77,5
HOPPER CAPACITY (kg)	150
REDUCED / NOMINAL POWER WATER (kW)	7,2 -24
REDUCED / NOMINAL EFFICIENCY (%)	91,6-91,3
HEATING VOLUME (m ³)	545
CONSUMPTION (kg/h)	1,6-5,3
CHIMNEY DIAMETER (mm)	100
HEIGHT (mm)	1360
WIDTH (mm)	1213
DEPTH (mm)	700
WEIGHT (kg)	413
WATER VOLUME (L)	50
PRESSURE (Bar)	3,0
CHIMNEY DRAUGHT REQUIRED (Pa)	12
GAS TEMPERATURE (°C)	65,7-112,9
EEL	122
MAXIMUM NOISE LEVEL (dB)	54



APPROVED PRODUCT






SZM A PLUS 32 A+



HOPPER AUTONOMY MIN-MAX (h)	25,3 - 90,0
HOPPER CAPACITY (kg)	180
REDUCED / NOMINAL POWER WATER (kW)	9,0 -32
REDUCED / NOMINAL EFFICIENCY (%)	91,3-91,7
HEATING VOLUME (m ³)	727
CONSUMPTION (kg/h)	2,0-7,1
CHIMNEY DIAMETER (mm)	100
HEIGHT (mm)	1530
WIDTH (mm)	1123
DEPTH (mm)	785
WEIGHT (kg)	425
WATER VOLUME (L)	78
PRESSURE (Bar)	3,0
CHIMNEY DRAUGHT REQUIRED (Pa)	10
GAS TEMPERATURE (°C)	67,3-123,4
EEL	123
MAXIMUM NOISE LEVEL (dB)	54



APPROVED PRODUCT




INCLUDED AS STANDARD

	
Description	Description
Wi-Fi Kit + (Columbus)	Cable for connection to inertia tank (2 probes NTC 10K)

OPTIONAL AUTOMATIC PLUS (PELLETS)



Description
Silo Cover Set 230/150Kg

Available in models SZM A PLUS 16 kW and SZM A PLUS 24 kW.

AUTOMATIC BOILERS SZM + SILO (PELLETS)



SZM A boilers feature an automatic cleaning system for the turbulators and burner. You can purchase an optional silo, which increases the capacity of your boiler by 200 kg. This silo has a pellet level sensor that detects when the tank is running low and alerts you to the need for refilling. This range includes a complete hydraulic kit and a cable to connect to the inertia tank.

SZM A 18

A+



HOPPER AUTONOMY MIN-MAX (h)	10,3 - 33,9
HOPPER CAPACITY (kg)	45
REDUCED / NOMINAL POWER WATER (kW)	5,7 - 18,0
REDUCED / NOMINAL EFFICIENCY (%)	87,8 - 90,1
HEATING VOLUME (m ³)	410
CONSUMPTION (kg/h)	1,3-4,4
CHIMNEY DIAMETER (mm)	100
HEIGHT (mm)	1355
WIDTH (mm)	677
DEPTH (mm)	110
WEIGHT (kg)	373
WATER VOLUME (L)	60
PRESSURE (Bar)	2,5
CHIMNEY DRAUGHT REQUIRED (Pa)	12
GAS TEMPERATURE (°C)	74,1-102,4
EEL	119
MAXIMUM NOISE LEVEL (dB)	54



APPROVED PRODUCT



SZM A 24

A+



HOPPER AUTONOMY MIN-MAX (h)	8,5 - 33,9
HOPPER CAPACITY (kg)	45
REDUCED / NOMINAL POWER WATER (kW)	5,7 - 23,0
REDUCED / NOMINAL EFFICIENCY (%)	87,8 - 90,2
HEATING VOLUME (m ³)	545
CONSUMPTION (kg/h)	1,3 - 5,3
CHIMNEY DIAMETER (mm)	100
HEIGHT (mm)	1355
WIDTH (mm)	677
DEPTH (mm)	110
WEIGHT (kg)	386
WATER VOLUME (L)	60
PRESSURE (Bar)	2,5
CHIMNEY DRAUGHT REQUIRED (Pa)	12
GAS TEMPERATURE (°C)	74,1-112,0
EEL	119
MAXIMUM NOISE LEVEL (dB)	54



APPROVED PRODUCT



SZM A 30

A+



HOPPER AUTONOMY MIN-MAX (h)	7,3 - 33,9
HOPPER CAPACITY (kg)	45
REDUCED / NOMINAL POWER WATER (kW)	5,65 - 26,88
REDUCED / NOMINAL EFFICIENCY (%)	87,8 - 90,4
HEATING VOLUME (m ³)	660
CONSUMPTION (kg/h)	1,3-6,1
CHIMNEY DIAMETER (mm)	100
HEIGHT (mm)	1355
WIDTH (mm)	677
DEPTH (mm)	110
WEIGHT (kg)	386
WATER VOLUME (L)	60
PRESSURE (Bar)	2,5
CHIMNEY DRAUGHT REQUIRED (Pa)	12
GAS TEMPERATURE (°C)	74,1-121,6
EEL	119
MAXIMUM NOISE LEVEL (dB)	54



APPROVED PRODUCT



You can attach a silo with a capacity of 200 kg to increase the autonomy of your equipment.

OPTIONALS AUTOMATIC BOILERS SZM (PELLETS)



Description
Wi-Fi Kit + (Columbus)



Description
Wi-Fi Kit



Description
Optional Silo - 200 kg

WOOD CENTRAL HEATING

WHAT ARE THE BENEFITS OF CHOOSING A SOLZAIMA WOOD CENTRAL HEATING SOLUTION TO WARM YOUR HOME?

The water central heating equipments are the ideal solution for the comfort of your home. They can work autonomously or interconnected with the remaining heating systems. They are perfectly complementary and become the most economical solution for those who wish to replace or complement the following forms of energy:

a) Solar thermal panel - in this case, the complementarity is perfect. Solar panels work well during the day and in summer, for the heating of sanitary waters. The central water heating equipment usually works in winter and night to heat your whole house and helps the solar panels to heat the sanitary water when the sun is not available.

b) Pellet central heating boiler - in this situation, when you switch on your wood central heating appliance, a thermostat will automatically switch off your pellet boiler, which will bring you high fuel savings during peak hours.

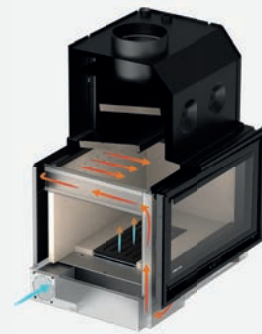
c) Gas or other forms of heating - interconnection with central heating equipment gives you considerable energy savings, a better atmosphere in your home and minimises environmental damage, since the water central heating stove is a CO₂ neutral form of heating.

Wood is the most economical fuel on the market and also the one that has shown the least price volatility in recent years. It is a source of clean energy with a future, since it is essential to promote effective forest management as a way of preserving and boosting an important national resource.



HIGH TEMPERATURE RESISTANCE

Our products have a vermiculite interior, a material consisting of a large percentage of silica and air, resistant to high temperatures, which increases the equipment's durability and combustion efficiency.



BEAUTIFUL FLAME

All the equipments allow you to regulate the primary and secondary air using a single handle, to ensure an efficient flame with the greatest possible comfort.



EASY TRANSPORT

The stoves are built with four openings to connect the transport kit, making it easier to transport them. Just buy the kit once and you can use it on all inserts.



SAFE INSTALLATION

Safety system with heat exchanger that prevents the equipment from being damaged by excessive temperature, due, for example, to a damaged pump or a power cut.



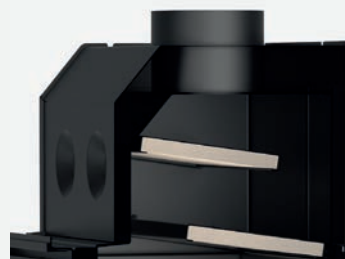
COMBUSTION OPTIMISATION

This kit collects air from the exterior of the home, optimising the oxygen supply for the combustion. It also allows an automatic combustion regulator to be attached that blocks the air from entering when the desired water temperature is achieved.



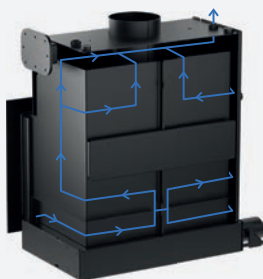
DURABLE MATERIALS

Castiron grill that increases durability.



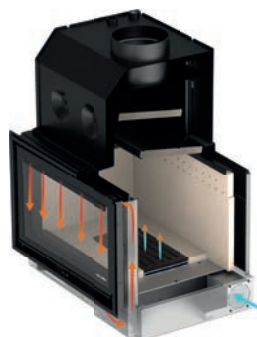
EFFICIENT HEAT TRANSFER

The double deflector allows gases to be retained in the combustion chamber longer, increasing heat transfer efficiency.



HOT WATER RETENTION

Backboiler fires have a hydraulic circuit with a labyrinth to retain hot water for longer periods of time, increasing efficiency and reducing the probability of condensation phenomena.



GLASS ALWAYS CLEAN

The air circulation in an exclusive channel that directs the air towards the glass allows it to remain clean at all times during the operation of the device.

WOOD CENTRAL HEATING

VERTICAL DOOR BACKBOILER FIRES (WOOD)

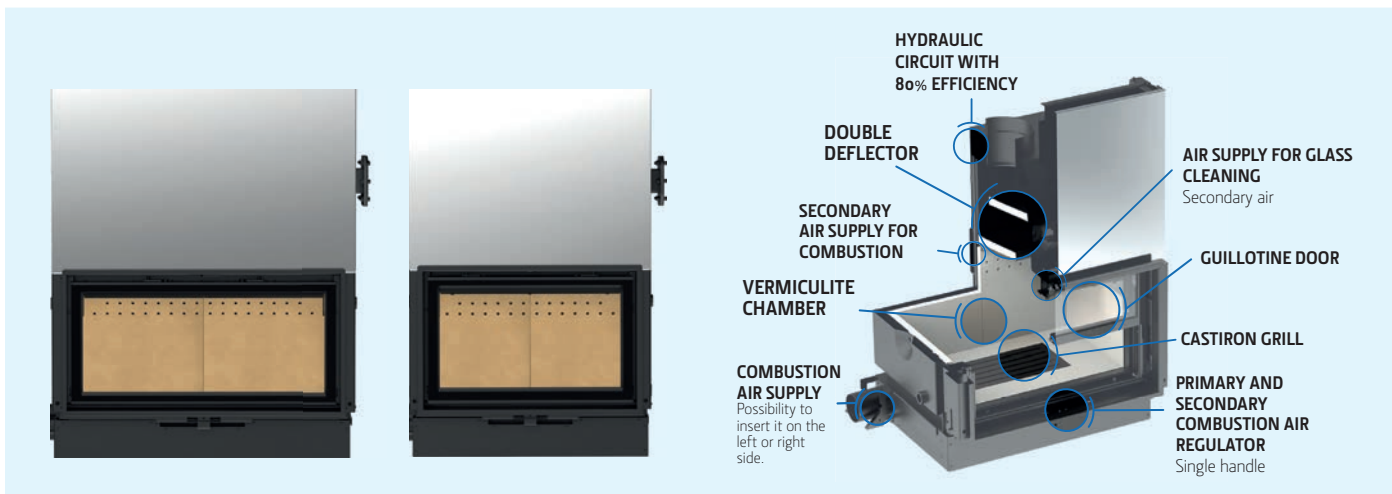


The new central heating wood backboiler fires with a vertical sliding door, also known as a guillotine door, offer an elegant and functional alternative. They feature extra large flame vision areas to ensure you never miss a second of the fire's stunning glow. The door is robust and features a counterweight, so it can remain open at any point along its path. They can be opened from the right or left side, using the key that comes with the equipment, as illustrated in the images below.



The key used to open and close the door also serves to swing the door forwards at a 45° angle, to make cleaning the inside of the glass easier. The screen-printed glass is made of thermo-resistant glass ceramics, which supports temperatures up to 750°C in continuous use. The units have a side cover that allows the installation of an anti-emballement kit (sold separately). Both models allow the application of a 4-sided frame with 4.4 cm or 7.4 cm.

VERTICAL DOOR BACKBOILER FIRES (WOOD)



ACQUA ECO PV

OUTPUT POWER (kW)	28,2
WATER OUTPUT POWER (kW)	18,7
EFFICIENCY (%)	80,4
HEATING VOLUME (m ³)	64,1
CONSUMPTION (kg/h)	8,3
CHIMNEY DIAMETER (mm)	200
HEIGHT (mm)	1017
WIDTH (mm)	989
DEPTH (mm)	612
WEIGHT (kg)	245
LOG SIZE (mm)	500
WATER VOLUME (L)	76
PRESSURE (Bar)	3

A+



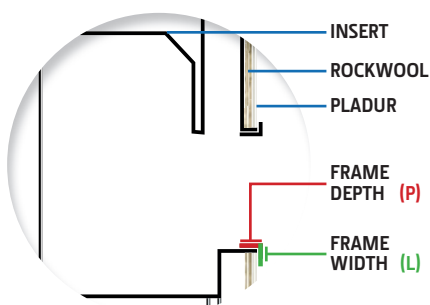
MYTHO ECO PV

OUTPUT POWER (kW)	21,7
WATER OUTPUT POWER (kW)	15,4
EFFICIENCY (%)	80,0
HEATING VOLUME (m ³)	49,3
CONSUMPTION (kg/h)	6,2
CHIMNEY DIAMETER (mm)	200
HEIGHT (mm)	1017
WIDTH (mm)	795
DEPTH (mm)	605
WEIGHT (kg)	225
LOG SIZE (mm)	500
WATER VOLUME (L)	63
PRESSURE (Bar)	3

A+



OPTIONAL BACKBOILER FIRES FRAMES (WOOD)



L=4,4 cm; P=4 cm or P=6 cm

Frame 4L Black 4.4 cm wide. You can choose to buy the frame with 4 cm or 6 cm depth.



L=4,4 cm; P=4 cm or P=6 cm

Black 4L frame in glass 4.4 cm wide. You can choose to buy the frame with 4 cm or 6 cm depth.



L=7,4 cm; P=4 cm or P=6 cm

Frame 4L Black with 7.4 cm width. You can choose to buy the frame with 4 cm or 6 cm depth.

OPTIONALS BACKBOILER FIRES (WOOD)



Description
Table



Description
Set of 4 carrying wheels



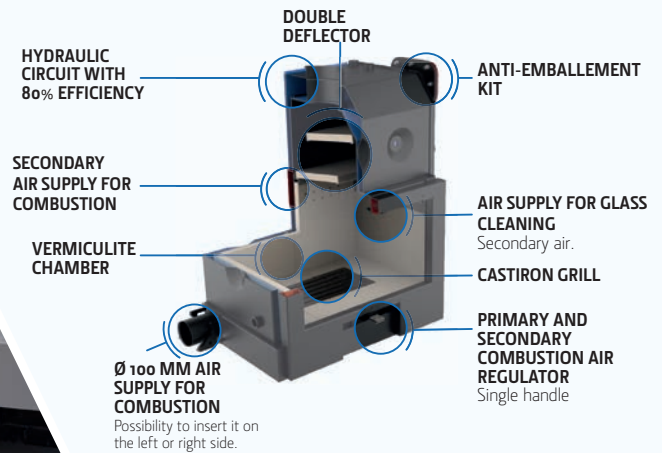
Description
Set of 4 carrying handles



Description
Anti-emballement kit

WOOD CENTRAL HEATING

BACKBOILER FIRES (WOOD)



ZAIMA ECO GREY

A+

OUTPUT POWER (kW)	21,7
WATER OUTPUT POWER (kW)	15,4
EFFICIENCY (%)	80,0
HEATING VOLUME (m ³)	493
CONSUMPTION (kg/h)	6,2
CHIMNEY DIAMETER (mm)	200
HEIGHT (mm)	1017
WIDTH (mm)	795
DEPTH (mm)	600
WEIGHT (kg)	245
LOG SIZE (mm)	500
WATER VOLUME (L)	63
PRESSURE (Bar)	3



ZAIMA ECO BLACK

A+

OUTPUT POWER (kW)	21,7
WATER OUTPUT POWER (kW)	15,4
EFFICIENCY (%)	80,0
HEATING VOLUME (m ³)	493
CONSUMPTION (kg/h)	6,2
CHIMNEY DIAMETER (mm)	200
HEIGHT (mm)	1017
WIDTH (mm)	795
DEPTH (mm)	600
WEIGHT (kg)	245
LOG SIZE (mm)	500
WATER VOLUME (L)	63
PRESSURE (Bar)	3



ECOFOGO ECO GREY

A+

OUTPUT POWER (kW)	21,7
WATER OUTPUT POWER (kW)	15,4
EFFICIENCY (%)	80,0
HEATING VOLUME (m ³)	493
CONSUMPTION (kg/h)	6,2
CHIMNEY DIAMETER (mm)	200
HEIGHT (mm)	1017
WIDTH (mm)	795
DEPTH (mm)	605
WEIGHT (kg)	225
LOG SIZE (mm)	500
WATER VOLUME (L)	63
PRESSURE (Bar)	3



ECOFOGO ECO BLACK

A+

OUTPUT POWER (kW)	21,7
WATER OUTPUT POWER (kW)	15,4
EFFICIENCY (%)	80,0
HEATING VOLUME (m ³)	493
CONSUMPTION (kg/h)	6,2
CHIMNEY DIAMETER (mm)	200
HEIGHT (mm)	1017
WIDTH (mm)	795
DEPTH (mm)	605
WEIGHT (kg)	225
LOG SIZE (mm)	500
WATER VOLUME (L)	63
PRESSURE (Bar)	3



MYTHO ECO

A+

OUTPUT POWER (kW)	21,7
WATER OUTPUT POWER (kW)	15,4
EFFICIENCY (%)	80,0
HEATING VOLUME (m ³)	493
CONSUMPTION (kg/h)	6,2
CHIMNEY DIAMETER (mm)	200
HEIGHT (mm)	1017
WIDTH (mm)	795
DEPTH (mm)	605
WEIGHT (kg)	225
LOG SIZE (mm)	500
WATER VOLUME (L)	63
PRESSURE (Bar)	3



ACQUA ECO

A+

OUTPUT POWER (kW)	28,2
WATER OUTPUT POWER (kW)	18,7
EFFICIENCY (%)	80,4
HEATING VOLUME (m ³)	641
CONSUMPTION (kg/h)	8,3
CHIMNEY DIAMETER (mm)	200
HEIGHT (mm)	1017
WIDTH (mm)	989
DEPTH (mm)	612
WEIGHT (kg)	245
LOG SIZE (mm)	500
WATER VOLUME (L)	76
PRESSURE (Bar)	3



OPTIONAL FRAMES WATER INSERTS (FIREWOOD)



4S Frame 4,4cm Black
(Acqua Eco, Acqua Eco PV, Mytho Eco, Mytho Eco PV, Ecofogo Eco)



4S Frame 7,4cm Black
(Acqua Eco, Acqua Eco PV, Mytho Eco, Mytho Eco PV, Ecofogo Eco)



4S Frame 4,4cm Glass
(Mytho Eco, Ecofogo Eco Black)



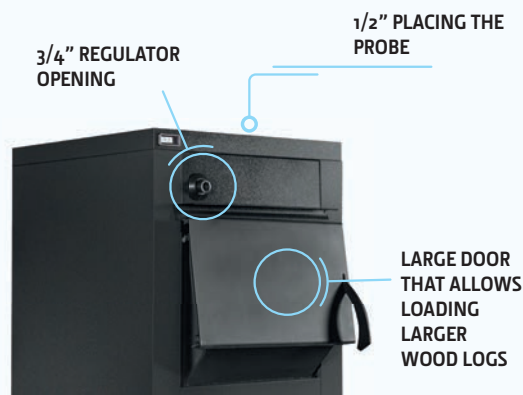
4S Frame 4,4cm Grey
(Ecofogo Eco Grey)



4S Frame 7,4cm Grey
(Ecofogo Eco Grey)



BOILERS SZM W PLUS (WOOD)



This models can incorporate a ventilation system to automatically control the air supply to the combustion according to the water temperature and also the circulating pump. Equipped with a hydraulic system with 1 1/4" connections and an additional circuit for the installation of a thermal relief valve, increasing the safety of the installation. The equipment also offers an easy igniting and cleaning system.

W PLUS 25 KW	
OUTPUT POWER (kW)	25
EFFICIENCY (%)	89,8
HEATING VOLUME (m ³)	568
CONSUMPTION (kg/h)	5,0
CHIMNEY DIAMETER (mm)	160
HEIGHT (mm)	1260
WIDTH (mm)	530
DEPTH (mm)	1100
WEIGHT (kg)	281
LOG SIZE (mm)	500
WATER VOLUME (L)	75
PRESSURE (Bar)	3
CHIMNEY DRAUGHT REQUIRED (Pa)	18
GAS TEMPERATURE (°C)	193,0
EEL	123

OPTIONAL

* Combustible with 5,08 Kwh/Kg calorific power and humidity content <6%.

W PLUS 30 KW	
OUTPUT POWER (kW)	30
EFFICIENCY (%)	90,2
HEATING VOLUME (m ³)	682
CONSUMPTION (kg/h)	5,9
CHIMNEY DIAMETER (mm)	180
HEIGHT (mm)	1260
WIDTH (mm)	590
DEPTH (mm)	1100
WEIGHT (kg)	295
LOG SIZE (mm)	500
WATER VOLUME (L)	90
PRESSURE (Bar)	3
CHIMNEY DRAUGHT REQUIRED (Pa)	19
GAS TEMPERATURE (°C)	191,5
EEL	124

OPTIONAL

* Combustible with 5,08 Kwh/Kg calorific power and humidity content <6%.

W PLUS 35 KW	
OUTPUT POWER (kW)	35
EFFICIENCY (%)	90,6
HEATING VOLUME (m ³)	795
CONSUMPTION (kg/h)	6,9
CHIMNEY DIAMETER (mm)	180
HEIGHT (mm)	1260
WIDTH (mm)	620
DEPTH (mm)	1100
WEIGHT (kg)	305
LOG SIZE (mm)	500
WATER VOLUME (L)	105
PRESSURE (Bar)	3
CHIMNEY DRAUGHT REQUIRED (Pa)	20
GAS TEMPERATURE (°C)	190,0
EEL	124

OPTIONAL

* Combustible with 5,08 Kwh/Kg calorific power and humidity content <6%.

W PLUS 40 KW	
OUTPUT POWER (kW)	40
EFFICIENCY (%)	90,7
HEATING VOLUME (m ³)	909
CONSUMPTION (kg/h)	7,9
CHIMNEY DIAMETER (mm)	180
HEIGHT (mm)	1260
WIDTH (mm)	670
DEPTH (mm)	1100
WEIGHT (kg)	320
LOG SIZE (mm)	500
WATER VOLUME (L)	120
PRESSURE (Bar)	3
CHIMNEY DRAUGHT REQUIRED (Pa)	21
GAS TEMPERATURE (°C)	195,7
EEL	124

OPTIONAL

* Combustible with 5,08 Kwh/Kg calorific power and humidity content <6%.



OPTIONALS BOILERS SZM W PLUS (WOOD)



Description

W Plus Ventilation Kit

The ventilation kit includes 1 fan with a flow rate of 135m³/h, connection cables and 1 air outlet on the back.

LOCAL HEATING

Pine Collection 12

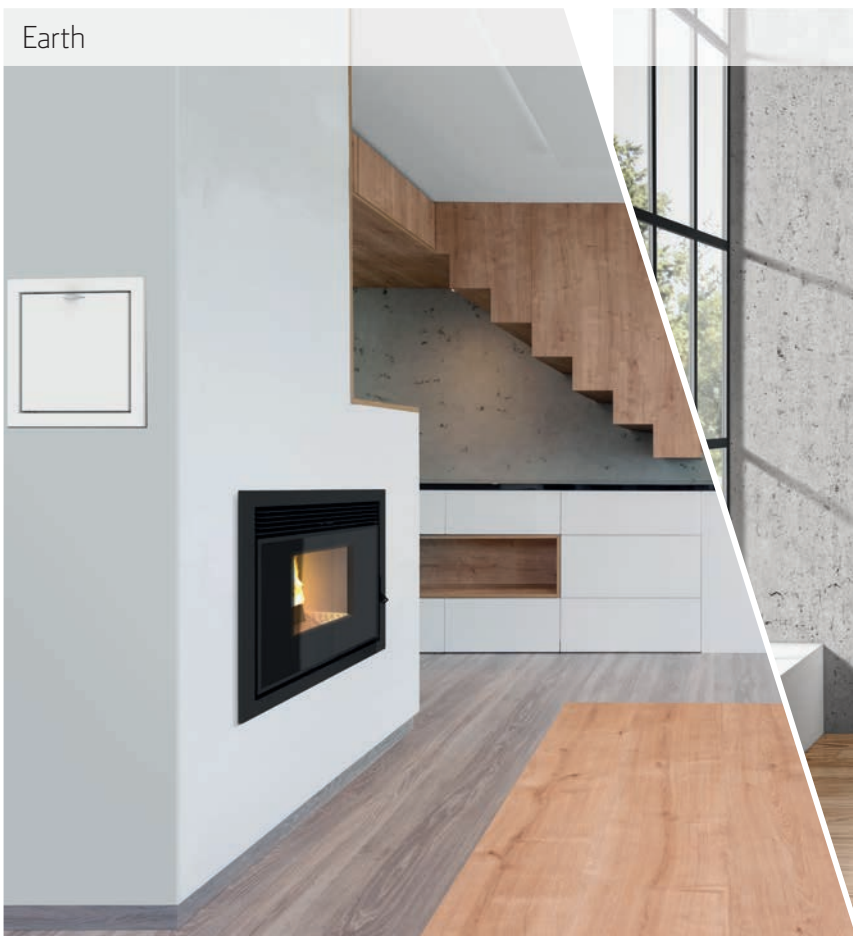
Juno Eco 80



Back Box Slim Eco

Everest Round

Earth



Nevada



Aspen Collection 10



M12F Eco

PELLETS LOCAL HEATING

WHAT ARE THE BENEFITS OF CHOOSING A SOLZAIMA PELLET LOCAL HEATING SOLUTION TO WARM YOUR HOME?

Pellets are small pressed cylinders made of wood which are used to generate thermal energy through a combustion process. They are the most economical fuel on the market for heating a home after wood, which allows the investment in the equipment to be paid off in a very short time. They are a clean energy source with a future and allow greater autonomy, efficiency and ease of use. They should be used with a maximum moisture content of 5-8%, certified by the EnPlus - A1 standard (EN 14961-2), which guarantees you the best heating, more economy and a long life for your equipment. In local heating solutions, you will heat one room, but you have the option of directing the air into the adjacent rooms, in some equipments. These heating equipment have an elegant and timeless design, which allows you to have several finishing options. At any time, should you wish to modify the design of your room, you can choose to change the aesthetics or colour of your equipment without having to purchase a new model. The included chrono-thermostat ensures the temperature at the time of operation according to your convenience. It is a clean energy source with a future, since it is fundamental to promote an effective forest management as a way to preserve and boost an important national resource.



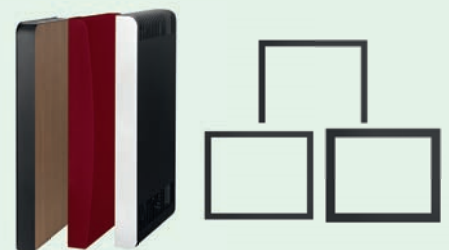
SMARTPHONE CONTROL

The equipment can be controlled by smartphone. You just need to install the 4Heat application and purchase a Solzaima Wi-Fi kit. This technology allows you to control your equipment from anywhere in the world.



EASY CLEANING

Easy access to the exchanger's cleaning system, which allows the heat transfer efficiency to be kept as constant as possible.



VARIETY OF COVERS AND FRAMES

The pellet stoves offer a wide range of covers so you can choose the one that best suits your home. The stoves also allow you to choose from various frame options for a perfect finish.



AJUSTABLE DISPLAY

The multilingual touch display allows you to adjust the power variables (manual or automatic), water temperature, pellet dosage, smoke extractor speed and also to program an internal timer to activate and deactivate the machine at set times in a simple and convenient way.



Only available on inserts

REMOTE CONTROL

The remote control allows you to switch your equipment on and off, as well as adjust the temperature and make various settings. All this is just a simple click away. The inserts control also allows you to perform all the display controls.



EFFICIENT CLEANING

The ash from the combustion process is all accumulated in the ash tray, making the cleaning process easier.



CONNECTABLE WITH OTHER DEVICES

The stoves are prepared to be easily connected with an external thermostat for temperature control.



DURABLE MATERIALS

The castiron firing cup ensures uniform heat retention and distribution as well as superior component durability. Every hour of burning, an automatic cleaning by blowing is carried out for 60 seconds at maximum speed.

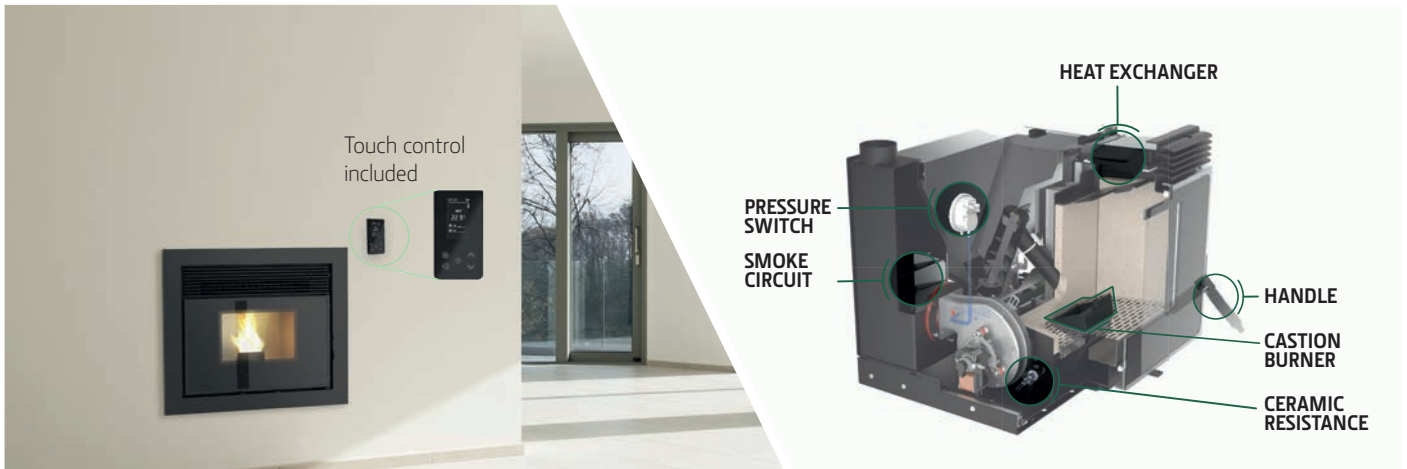


GLASS ALWAYS CLEAN

The air circulation in an exclusive channel that directs the air towards the glass contribute to keep the glass clean at all times during the operation of the appliance.

PELLETS LOCAL HEATING

INSERTS (PELLETS)



The pellet inserts range presents three types of loading systems: by a frontal drawer (Earth), by complete extraction of the equipment (Fire) or by a loading dock attached to the wall (Wind). The Wind model also allows for canalised ventilation.

EARTH

A+



HOPPER AUTONOMY MIN-MAX (h)	7,9-21,4
HOPPER CAPACITY (kg)	15
REDUCED / NOMINAL POWER (kW)	3,2-8,3
REDUCED / NOMINAL EFFICIENCY (%)	95,9-90,1
HEATING VOLUME (m ³)	189
CONSUMPTION (kg/h)	0,7-1,9
CHIMNEY DIAMETER (mm)	80
HEIGHT (mm)	605
WIDTH (mm)	688
DEPTH (mm)	573
WEIGHT (kg)	114
MAXIMUM NOISE LEVEL (dB)	48,2



FIRE

A+



HOPPER AUTONOMY MIN-MAX (h)	7,9 - 21,4
HOPPER CAPACITY (kg)	15
REDUCED / NOMINAL POWER (kW)	3,2-8,3
REDUCED / NOMINAL EFFICIENCY (%)	95,9-90,1
HEATING VOLUME (m ³)	189
CONSUMPTION (kg/h)	0,7-1,9
CHIMNEY DIAMETER (mm)	80
HEIGHT (mm)	561
WIDTH (mm)	688
DEPTH (mm)	573
WEIGHT (kg)	112
MAXIMUM NOISE LEVEL (dB)	48,2



WIND

A+



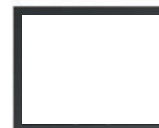
HOPPER AUTONOMY MIN-MAX (h)	7,9 - 21,4
HOPPER CAPACITY (kg)	15
REDUCED / NOMINAL POWER (kW)	3,2-8,3
REDUCED / NOMINAL EFFICIENCY (%)	95,9-90,1
HEATING VOLUME (m ³)	189
CONSUMPTION (kg/h)	0,7-1,9
CHIMNEY DIAMETER (mm)	80
HEIGHT (mm)	561
WIDTH (mm)	688
DEPTH (mm)	573
WEIGHT (kg)	116
MAXIMUM NOISE LEVEL (dB)	48,2



INSERTS FRAMES (PELLETS)



Description
Frame 3 Sides - 4.4 cm



Description
Frame 4 Sides - 4.4 cm



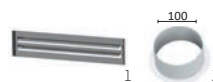
Description
Frame 4 Sides - 7.4 cm

INCLUDED AS STANDARD

OPTIONALS AIR INSERTS (PELLETS)



SMARTPHONE CONTROL



Description
Ventilation grill (1)

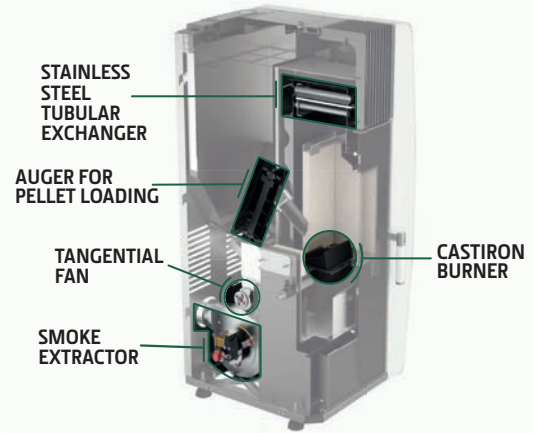
Hot air outlet kit (Ø 100) (2) (*)
(*) Used only in the Wind model.



Description
Support Table Kit



STOVES (PELLETS)



All pellet stoves have a rubber around the loading opening to prevent the entry of excess air, ensuring a more constant and economical combustion.

EUROPA A+

HOPPER AUTONOMY MIN-MAX (h)	8,0 - 16,2
HOPPER CAPACITY (kg)	11
REDUCED / NOMINAL POWER (kW)	3,2-6,1
REDUCED / NOMINAL EFFICIENCY (%)	95,0-92,0
HEATING VOLUME (m ³)	139
CONSUMPTION (kg/h)	0,7-1,4
CHIMNEY DIAMETER (mm)	80
HEIGHT (mm)	820
WIDTH (mm)	450
DEPTH (mm)	520
WEIGHT (kg)	65
MAXIMUM NOISE LEVEL (dB)	48,2

ready WiFi
EN 15245
EN 15246
EN 15247
EN 15248
EN 15249
EN 15250
EN 15251
EN 15252
EN 15253
EN 15254
EN 15255
EN 15256
EN 15257
EN 15258
EN 15259
EN 15260
EN 15261
EN 15262
EN 15263
EN 15264
EN 15265
EN 15266
EN 15267
EN 15268
EN 15269
EN 15270
EN 15271
EN 15272
EN 15273
EN 15274
EN 15275
EN 15276
EN 15277
EN 15278
EN 15279
EN 15280
EN 15281
EN 15282
EN 15283
EN 15284
EN 15285
EN 15286
EN 15287
EN 15288
EN 15289
EN 15290
EN 15291
EN 15292
EN 15293
EN 15294
EN 15295
EN 15296
EN 15297
EN 15298
EN 15299
EN 15300

COLOURS



HIMALAIA COLLECTION 8 KW A+

HOPPER AUTONOMY MIN-MAX (h)	8,3 - 22,0
HOPPER CAPACITY (kg)	15
REDUCED / NOMINAL POWER (kW)	3,0-8,0
REDUCED / NOMINAL EFFICIENCY (%)	96,0-91,3
HEATING VOLUME (m ³)	182
CONSUMPTION (kg/h)	0,7-1,8
CHIMNEY DIAMETER (mm)	80
HEIGHT (mm)	908
WIDTH (mm)	493
DEPTH (mm)	544
WEIGHT (kg)	83
MAXIMUM NOISE LEVEL (dB)	48,2

ready WiFi
EN 15245
EN 15246
EN 15247
EN 15248
EN 15249
EN 15250
EN 15251
EN 15252
EN 15253
EN 15254
EN 15255
EN 15256
EN 15257
EN 15258
EN 15259
EN 15260
EN 15261
EN 15262
EN 15263
EN 15264
EN 15265
EN 15266
EN 15267
EN 15268
EN 15269
EN 15270
EN 15271
EN 15272
EN 15273
EN 15274
EN 15275
EN 15276
EN 15277
EN 15278
EN 15279
EN 15280
EN 15281
EN 15282
EN 15283
EN 15284
EN 15285
EN 15286
EN 15287
EN 15288
EN 15289
EN 15290
EN 15291
EN 15292
EN 15293
EN 15294
EN 15295
EN 15296
EN 15297
EN 15298
EN 15299
EN 15300

COLOURS



FUJI COLLECTION 8 KW A+

HOPPER AUTONOMY MIN-MAX (h)	8,3 - 22,0
HOPPER CAPACITY (kg)	15
REDUCED / NOMINAL POWER (kW)	3,0-8,0
REDUCED / NOMINAL EFFICIENCY (%)	96,0-91,3
HEATING VOLUME (m ³)	182
CONSUMPTION (kg/h)	0,7-1,8
CHIMNEY DIAMETER (mm)	80
HEIGHT (mm)	908
WIDTH (mm)	493
DEPTH (mm)	556
WEIGHT (kg)	84
MAXIMUM NOISE LEVEL (dB)	48,2

ready WiFi
HETAS
EN 15245
EN 15246
EN 15247
EN 15248
EN 15249
EN 15250
EN 15251
EN 15252
EN 15253
EN 15254
EN 15255
EN 15256
EN 15257
EN 15258
EN 15259
EN 15260
EN 15261
EN 15262
EN 15263
EN 15264
EN 15265
EN 15266
EN 15267
EN 15268
EN 15269
EN 15270
EN 15271
EN 15272
EN 15273
EN 15274
EN 15275
EN 15276
EN 15277
EN 15278
EN 15279
EN 15280
EN 15281
EN 15282
EN 15283
EN 15284
EN 15285
EN 15286
EN 15287
EN 15288
EN 15289
EN 15290
EN 15291
EN 15292
EN 15293
EN 15294
EN 15295
EN 15296
EN 15297
EN 15298
EN 15299
EN 15300

COLOURS



K2 COLLECTION 8 KW A+

HOPPER AUTONOMY MIN-MAX (h)	8,3 - 22,0
HOPPER CAPACITY (kg)	15
REDUCED / NOMINAL POWER (kW)	3,0-8,0
REDUCED / NOMINAL EFFICIENCY (%)	96,0-91,3
HEATING VOLUME (m ³)	182
CONSUMPTION (kg/h)	0,7-1,8
CHIMNEY DIAMETER (mm)	80
HEIGHT (mm)	908
WIDTH (mm)	562
DEPTH (mm)	546
WEIGHT (kg)	82
MAXIMUM NOISE LEVEL (dB)	48,2

ready WiFi
HETAS
EN 15245
EN 15246
EN 15247
EN 15248
EN 15249
EN 15250
EN 15251
EN 15252
EN 15253
EN 15254
EN 15255
EN 15256
EN 15257
EN 15258
EN 15259
EN 15260
EN 15261
EN 15262
EN 15263
EN 15264
EN 15265
EN 15266
EN 15267
EN 15268
EN 15269
EN 15270
EN 15271
EN 15272
EN 15273
EN 15274
EN 15275
EN 15276
EN 15277
EN 15278
EN 15279
EN 15280
EN 15281
EN 15282
EN 15283
EN 15284
EN 15285
EN 15286
EN 15287
EN 15288
EN 15289
EN 15290
EN 15291
EN 15292
EN 15293
EN 15294
EN 15295
EN 15296
EN 15297
EN 15298
EN 15299
EN 15300

COLOURS



PELLETS LOCAL HEATING

STOVES (PELLETS)

ALPES 8 KW

A+



HOPPER AUTONOMY MIN-MAX (h)	8,3 - 22,1
HOPPER CAPACITY (kg)	15
REDUCED / NOMINAL POWER (kW)	3,0-8,0
REDUCED / NOMINAL EFFICIENCY (%)	96,0-91,3
HEATING VOLUME (m ³)	182
CONSUMPTION (kg/h)	0,7-1,8
CHIMNEY DIAMETER (mm)	80
HEIGHT (mm)	994
WIDTH (mm)	492
DEPTH (mm)	564
WEIGHT (kg)	103
MAXIMUM NOISE LEVEL (dB)	48,2



BASE COLOURS

SPECIAL COLOURS



WHITE BORDEAUX BLACK



DARK CORTEN



ALPES 8 KW Glass Door

A+



HOPPER AUTONOMY MIN-MAX (h)	8,3 - 22,1
HOPPER CAPACITY (kg)	15
REDUCED / NOMINAL POWER (kW)	3,0-8,0
REDUCED / NOMINAL EFFICIENCY (%)	96,0-91,3
HEATING VOLUME (m ³)	182
CONSUMPTION (kg/h)	0,7-1,8
CHIMNEY DIAMETER (mm)	80
HEIGHT (mm)	994
WIDTH (mm)	492
DEPTH (mm)	564
WEIGHT (kg)	103
MAXIMUM NOISE LEVEL (dB)	48,2



BASE COLOURS

SPECIAL COLOURS



WHITE BORDEAUX BLACK



DARK CORTEN



PINE COLLECTION 8 KW

A+



HOPPER AUTONOMY MIN-MAX (h)	8,3 - 22,1
HOPPER CAPACITY (kg)	15
REDUCED / NOMINAL POWER (kW)	3,0-8,0
REDUCED / NOMINAL EFFICIENCY (%)	96,0-91,3
HEATING VOLUME (m ³)	182
CONSUMPTION (kg/h)	0,7-1,8
CHIMNEY DIAMETER (mm)	80
HEIGHT (mm)	966
WIDTH (mm)	542
DEPTH (mm)	566
WEIGHT (kg)	101
MAXIMUM NOISE LEVEL (dB)	48,2



BASE COLOURS

SPECIAL COLOURS



WHITE



OAK



PINE COLLECTION 8 KW Glass Door

A+



HOPPER AUTONOMY MIN-MAX (h)	8,3 - 22,1
HOPPER CAPACITY (kg)	15
REDUCED / NOMINAL POWER (kW)	3,0-8,0
REDUCED / NOMINAL EFFICIENCY (%)	96,0-91,3
HEATING VOLUME (m ³)	182
CONSUMPTION (kg/h)	0,7-1,8
CHIMNEY DIAMETER (mm)	80
HEIGHT (mm)	966
WIDTH (mm)	542
DEPTH (mm)	566
WEIGHT (kg)	101
MAXIMUM NOISE LEVEL (dB)	48,2



BASE COLOURS

SPECIAL COLOURS



WHITE



OAK



LEAF COLLECTION 8 KW

A+



HOPPER AUTONOMY MIN-MAX (h)	8,3 - 22,1
HOPPER CAPACITY (kg)	15
REDUCED / NOMINAL POWER (kW)	3,0-8,0
REDUCED / NOMINAL EFFICIENCY (%)	96,0-91,3
HEATING VOLUME (m ³)	182
CONSUMPTION (kg/h)	0,7-1,8
CHIMNEY DIAMETER (mm)	80
HEIGHT (mm)	966
WIDTH (mm)	507
DEPTH (mm)	566
WEIGHT (kg)	99
MAXIMUM NOISE LEVEL (dB)	48,2



BASE COLOURS

SPECIAL COLOURS



BLACK AND WHITE



OAK



LEAF COLLECTION 8 KW Glass Door

A+



HOPPER AUTONOMY MIN-MAX (h)	8,3 - 22,1
HOPPER CAPACITY (kg)	15
REDUCED / NOMINAL POWER (kW)	3,0-8,0
REDUCED / NOMINAL EFFICIENCY (%)	96,0-91,3
HEATING VOLUME (m ³)	182
CONSUMPTION (kg/h)	0,7-1,8
CHIMNEY DIAMETER (mm)	80
HEIGHT (mm)	966
WIDTH (mm)	507
DEPTH (mm)	566
WEIGHT (kg)	99
MAXIMUM NOISE LEVEL (dB)	48,2



BASE COLOURS

SPECIAL COLOURS



BLACK AND WHITE



OAK



STOVES (PELLETS)

**ASPEN COLLECTION
8 KW**

A+

HOPPER AUTONOMY MIN-MAX (h)	8,3 - 22,1
HOPPER CAPACITY (kg)	15
REDUCED / NOMINAL POWER (kW)	3,0-8,0
REDUCED / NOMINAL EFFICIENCY (%)	96,0-91,3
HEATING VOLUME (m ³)	182
CONSUMPTION (kg/h)	0,7-1,8
CHIMNEY DIAMETER (mm)	80
HEIGHT (mm)	966
WIDTH (mm)	473
DEPTH (mm)	566
WEIGHT (kg)	100
MAXIMUM NOISE LEVEL (dB)	48,2



BASIC COLOURS

SPECIAL COLOURS



BLACK AND WHITE



OAK



BLACK



**ASPEN COLLECTION
8 KW - Glass Door**

A+

HOPPER AUTONOMY MIN-MAX (h)	8,3 - 22,1
HOPPER CAPACITY (kg)	15
REDUCED / NOMINAL POWER (kW)	3,0-8,0
REDUCED / NOMINAL EFFICIENCY (%)	96,0-91,3
HEATING VOLUME (m ³)	182
CONSUMPTION (kg/h)	0,7-1,8
CHIMNEY DIAMETER (mm)	80
HEIGHT (mm)	966
WIDTH (mm)	473
DEPTH (mm)	566
WEIGHT (kg)	100
MAXIMUM NOISE LEVEL (dB)	48,2



BASIC COLOURS

SPECIAL COLOURS



BLACK AND WHITE



OAK



BLACK



ALPES 10 KW

A+

HOPPER AUTONOMY MIN-MAX (h)	7,4 - 22,0
HOPPER CAPACITY (kg)	17
REDUCED / NOMINAL POWER (kW)	3,5 - 10,0
REDUCED / NOMINAL EFFICIENCY (%)	96,0 - 91,4
HEATING VOLUME (m ³)	227
CONSUMPTION (kg/h)	0,8-2,3
CHIMNEY DIAMETER (mm)	80
HEIGHT (mm)	1153
WIDTH (mm)	492
DEPTH (mm)	551
WEIGHT (kg)	115
MAXIMUM NOISE LEVEL (dB)	48,2



BASIC COLOURS

SPECIAL COLOURS



WHITE



BORDEAUX



BLACK



DARK CORTEN



**ALPES 10 KW
Glass Door**

A+

HOPPER AUTONOMY MIN-MAX (h)	7,4 - 22,0
HOPPER CAPACITY (kg)	17
REDUCED / NOMINAL POWER (kW)	3,5 - 10,0
REDUCED / NOMINAL EFFICIENCY (%)	96,0 - 91,4
HEATING VOLUME (m ³)	227
CONSUMPTION (kg/h)	0,8-2,3
CHIMNEY DIAMETER (mm)	80
HEIGHT (mm)	1153
WIDTH (mm)	492
DEPTH (mm)	551
WEIGHT (kg)	115
MAXIMUM NOISE LEVEL (dB)	48,2



BASIC COLOURS

SPECIAL COLOURS



WHITE



BORDEAUX



BLACK



DARK CORTEN



PINE COLLECTION 10 KW

A+

HOPPER AUTONOMY MIN-MAX (h)	7,4 - 22,0
HOPPER CAPACITY (kg)	17
REDUCED / NOMINAL POWER (kW)	3,5 - 10,0
REDUCED / NOMINAL EFFICIENCY (%)	96,0 - 91,4
HEATING VOLUME (m ³)	227
CONSUMPTION (kg/h)	0,8-2,3
CHIMNEY DIAMETER (mm)	80
HEIGHT (mm)	1088
WIDTH (mm)	559
DEPTH (mm)	566
WEIGHT (kg)	111
MAXIMUM NOISE LEVEL (dB)	48,2



BASIC COLOURS

SPECIAL COLOURS



WHITE



OAK



**PINE COLLECTION 10 KW
Glass Door**

A+

HOPPER AUTONOMY MIN-MAX (h)	7,4 - 22,0
HOPPER CAPACITY (kg)	17
REDUCED / NOMINAL POWER (kW)	3,5 - 10,0
REDUCED / NOMINAL EFFICIENCY (%)	96,0 - 91,4
HEATING VOLUME (m ³)	227
CONSUMPTION (kg/h)	0,8-2,3
CHIMNEY DIAMETER (mm)	80
HEIGHT (mm)	1088
WIDTH (mm)	559
DEPTH (mm)	566
WEIGHT (kg)	111
MAXIMUM NOISE LEVEL (dB)	48,2



BASIC COLOURS

SPECIAL COLOURS



WHITE



OAK



STOVES (PELLETS)

LEAF COLLECTION 10 KW A+



HOPPER AUTONOMY MIN-MAX (h)	7,4 - 22,0
HOPPER CAPACITY (kg)	17
REDUCED / NOMINAL POWER (kW)	3,5 - 10,0
REDUCED / NOMINAL EFFICIENCY (%)	96,0 - 91,4
HEATING VOLUME (m ³)	227
CONSUMPTION (kg/h)	0,8-2,3
CHIMNEY DIAMETER (mm)	80
HEIGHT (mm)	1088
WIDTH (mm)	507
DEPTH (mm)	566
WEIGHT (kg)	108
MAXIMUM NOISE LEVEL (dB)	48,2

ready WiFi
EN 13240 plus
Icons: Fan, Remote, WiFi, Thermostat, Pellets, Stove, Control Panel, Power, Settings

COLOURS



BLACK AND WHITE

SPECIAL COLOURS



OAK



LEAF COLLECTION 10 KW A+ Glass Door



HOPPER AUTONOMY MIN-MAX (h)	7,4 - 22,0
HOPPER CAPACITY (kg)	17
REDUCED / NOMINAL POWER (kW)	3,5 - 10,0
REDUCED / NOMINAL EFFICIENCY (%)	96,0 - 91,4
HEATING VOLUME (m ³)	227
CONSUMPTION (kg/h)	0,8-2,3
CHIMNEY DIAMETER (mm)	80
HEIGHT (mm)	1088
WIDTH (mm)	507
DEPTH (mm)	566
WEIGHT (kg)	108
MAXIMUM NOISE LEVEL (dB)	48,2

ready WiFi
EN 13240 plus
Icons: Fan, Remote, WiFi, Thermostat, Pellets, Stove, Control Panel, Power, Settings

COLOURS



BLACK AND WHITE

SPECIAL COLOURS



OAK



ASPEN COLLECTION 10 KW A+



HOPPER AUTONOMY MIN-MAX (h)	7,4 - 22,0
HOPPER CAPACITY (kg)	17
REDUCED / NOMINAL POWER (kW)	3,5 - 10,0
REDUCED / NOMINAL EFFICIENCY (%)	96,0 - 91,4
HEATING VOLUME (m ³)	227
CONSUMPTION (kg/h)	0,8-2,3
CHIMNEY DIAMETER (mm)	80
HEIGHT (mm)	1088
WIDTH (mm)	473
DEPTH (mm)	566
WEIGHT (kg)	110
MAXIMUM NOISE LEVEL (dB)	48,2

ready WiFi
EN 13240 plus
Icons: Fan, Remote, WiFi, Thermostat, Pellets, Stove, Control Panel, Power, Settings

COLOURS



BLACK AND WHITE

SPECIAL COLOURS



OAK



BLACK



ASPEN COLLECTION 10 KW Glass Door A+



HOPPER AUTONOMY MIN-MAX (h)	7,4 - 22,0
HOPPER CAPACITY (kg)	17
REDUCED / NOMINAL POWER (kW)	3,5 - 10,0
REDUCED / NOMINAL EFFICIENCY (%)	96,0 - 91,4
HEATING VOLUME (m ³)	227
CONSUMPTION (kg/h)	0,8-2,3
CHIMNEY DIAMETER (mm)	80
HEIGHT (mm)	1088
WIDTH (mm)	473
DEPTH (mm)	566
WEIGHT (kg)	110
MAXIMUM NOISE LEVEL (dB)	48,2

ready WiFi
EN 13240 plus
Icons: Fan, Remote, WiFi, Thermostat, Pellets, Stove, Control Panel, Power, Settings

COLOURS



BLACK AND WHITE

SPECIAL COLOURS



OAK



BLACK



HIMALAIA COLLECTION 10 KW A+



HOPPER AUTONOMY MIN-MAX (h)	8,7 - 26,0
HOPPER CAPACITY (kg)	20
REDUCED / NOMINAL POWER (kW)	3,5 - 10,0
REDUCED / NOMINAL EFFICIENCY (%)	96,0 - 91,4
HEATING VOLUME (m ³)	227
CONSUMPTION (kg/h)	0,8-2,3
CHIMNEY DIAMETER (mm)	80
HEIGHT (mm)	1076
WIDTH (mm)	493
DEPTH (mm)	554
WEIGHT (kg)	105
MAXIMUM NOISE LEVEL (dB)	48,2

ready WiFi
HETAS
EN 13240 plus
Icons: Fan, Remote, WiFi, Thermostat, Pellets, Stove, Control Panel, Power, Settings

COLOURS



WHITE

BORDEAUX

BLACK



K2 COLLECTION 10 KW A+



HOPPER AUTONOMY MIN-MAX (h)	8,7 - 26,0
HOPPER CAPACITY (kg)	20
REDUCED / NOMINAL POWER (kW)	3,5 - 10,0
REDUCED / NOMINAL EFFICIENCY (%)	96,0 - 91,4
HEATING VOLUME (m ³)	227
CONSUMPTION (kg/h)	0,8-2,3
CHIMNEY DIAMETER (mm)	80
HEIGHT (mm)	1076
WIDTH (mm)	562
DEPTH (mm)	554
WEIGHT (kg)	104
MAXIMUM NOISE LEVEL (dB)	48,2

ready WiFi
HETAS
EN 13240 plus
Icons: Fan, Remote, WiFi, Thermostat, Pellets, Stove, Control Panel, Power, Settings

COLOURS



WHITE

BORDEAUX

BLACK



STOVES (PELLETS)

FUJI COLLECTION 10 KW

A+

HOPPER AUTONOMY MIN-MAX (h)	8,7 - 26,0
HOPPER CAPACITY (kg)	20
REDUCED / NOMINAL POWER (kW)	3,5 - 10,0
REDUCED / NOMINAL EFFICIENCY (%)	96,0 - 91,4
HEATING VOLUME (m ³)	227
CONSUMPTION (kg/h)	0,8-2,3
CHIMNEY DIAMETER (mm)	80
HEIGHT (mm)	1076
WIDTH (mm)	493
DEPTH (mm)	554
WEIGHT (kg)	106
MAXIMUM NOISE LEVEL (dB)	48,2



OPTIONALS



Description
Wi-Fi Kit + (Columbus)



Description
Wi-Fi Kit

STOVES (PELLETS) - OLIVE CONCEPT

Be creative! The Olive Range allows you to configure your pellet stove according to your preferences. Start by choosing the power, between 8 kW and 10 kW. Next, choose various finishing options for the front and side, define the type of door you prefer and the colour of the handle. Try our product configurator at www.solzaima.co.uk/configurador and fall in love with the Olive concept.

A

Top Cover Options

Description

- Black
- White
- Bordeaux
- Grey

B

Front Cover Options

Description

- Black
- White
- Bordeaux
- Grey
- Oak

C

Side Cover Options

Description

- Black
- White
- Bordeaux

E

Door Options

Description

- Glass Door
- Normal Door

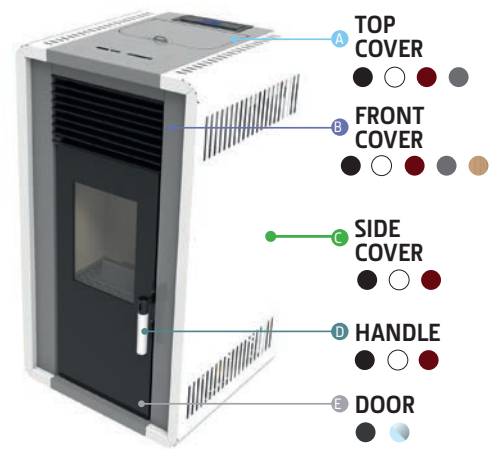
D

Handle Options

Description

- Black
- White
- Bordeaux

**TRY OUT OUR
OUR SIMULATOR!**



OLIVE CONCEPT 8 KW

A+

HOPPER AUTONOMY MIN-MAX (h)	8,3 - 22,1
HOPPER CAPACITY (kg)	15
REDUCED / NOMINAL POWER (kW)	3,0-8,0
REDUCED / NOMINAL EFFICIENCY (%)	96,0-91,3
HEATING VOLUME (m ³)	182
CONSUMPTION (kg/h)	0,7-1,8
CHIMNEY DIAMETER (mm)	80
HEIGHT (mm)	966
WIDTH (mm)	507
DEPTH (mm)	566
WEIGHT (kg)	100
MAXIMUM NOISE LEVEL (dB)	48,2



CONFIGURATIONS



OLIVE CONCEPT 10 KW

A+

HOPPER AUTONOMY MIN-MAX (h)	7,4 - 22,0
HOPPER CAPACITY (kg)	17
REDUCED / NOMINAL POWER (kW)	3,5 - 10,0
REDUCED / NOMINAL EFFICIENCY (%)	96,0 - 91,4
HEATING VOLUME (m ³)	227
CONSUMPTION (kg/h)	0,8-2,3
CHIMNEY DIAMETER (mm)	80
HEIGHT (mm)	1088
WIDTH (mm)	507
DEPTH (mm)	566
WEIGHT (kg)	110
MAXIMUM NOISE LEVEL (dB)	48,2



CONFIGURATIONS

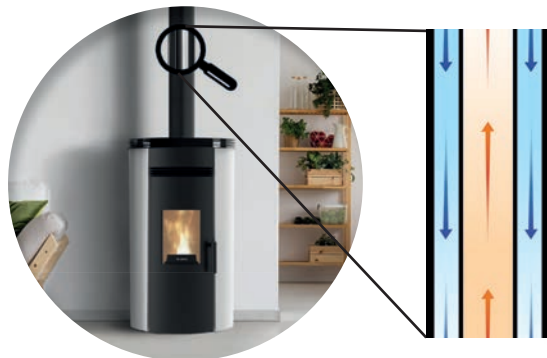


PELLETS LOCAL HEATING

AIRTIGHT STOVES (PELLETS)



Airtight stoves do not draw the combustion air from the room where they are installed, instead they draw it from outside the home through an axial tube, operating in an independent circuit. In other words, they collect air from the outside in order to combust and direct the gases to the smoke exit. This guarantees that your equipment will not interfere with other appliances that use the air inside the home, such as a kitchen extractor fan, for example. They are ideal for passive houses, as they can preserve the airtightness of homes and consequent energy efficiency.



If you prefer, you can place a concentric tube that allows the entrance of air and the exit of gases to occur in a single tube. The equipment will suck the air from the outside through the tube installed in the outer wall and will expel the combustion gases to the outside through the inner wall, as shown in the picture.

A+

CSTB



E100R - UP

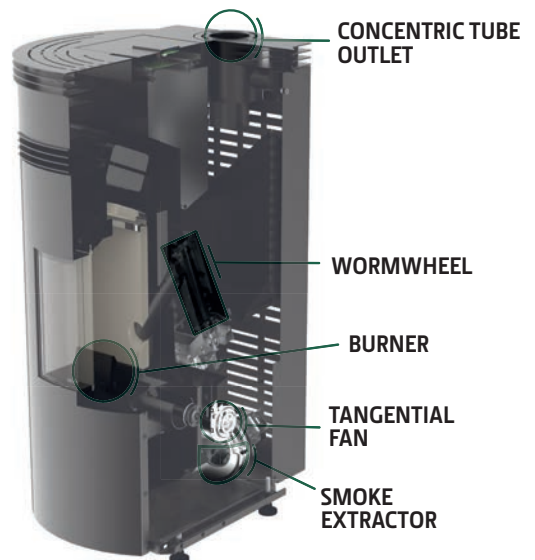
HOPPER AUTONOMY MIN-MAX (h)	9,6 - 22,1
HOPPER CAPACITY (kg)	15
REDUCED / NOMINAL POWER (kW)	3,1-7,0
REDUCED / NOMINAL EFFICIENCY (%)	96,0-92,0
HEATING VOLUME (m ³)	159
CONSUMPTION (kg/h)	0,7-1,6
CHIMNEY DIAMETER (mm)	80
HEIGHT (mm)	995
WIDTH (mm)	560
DEPTH (mm)	583
WEIGHT (kg)	91
MAXIMUM NOISE LEVEL (dB)	48,2

COLOURS



WHITE

BLACK



AIRTIGHT STOVES (PELLETS)

CSTB
for better construction



EVEREST 6,5 KW Glass Door

A+

HOPPER AUTONOMY MIN-MAX (h)	14,7 - 32,4
HOPPER CAPACITY (kg)	22
REDUCED / NOMINAL POWER (kW)	3,1-6,5
REDUCED / NOMINAL EFFICIENCY (%)	96,0-92,0
HEATING VOLUME (m ³)	148
CONSUMPTION (kg/h)	0,7-1,5
CHIMNEY DIAMETER (mm)	80
HEIGHT (mm)	1099
WIDTH (mm)	538
DEPTH (mm)	536
WEIGHT (kg)	121
MAXIMUM NOISE LEVEL (dB)	48,2

COLOURS



WHITE BORDEAUX BLACK

SPECIAL COLOURS



OAK



CSTB
for better construction



Etoo FUJI COLLECTION 8 KW

A+

HOPPER AUTONOMY MIN-MAX (h)	9,6 - 22,1
HOPPER CAPACITY (kg)	15
REDUCED / NOMINAL POWER (kW)	3,1-7,0
REDUCED / NOMINAL EFFICIENCY (%)	96,0-92,0
HEATING VOLUME (m ³)	159
CONSUMPTION (kg/h)	0,7-1,6
CHIMNEY DIAMETER (mm)	80
HEIGHT (mm)	926
WIDTH (mm)	493
DEPTH (mm)	588
WEIGHT (kg)	82
MAXIMUM NOISE LEVEL (dB)	48,2

COLOURS



OAK WHITE TEXTILE TEXTILE



CSTB
for better construction



E100 HIMALAIA COLLECTION 8 KW

A+

HOPPER AUTONOMY MIN-MAX (h)	9,6 - 22,1
HOPPER CAPACITY (kg)	15
REDUCED / NOMINAL POWER (kW)	3,1-7,0
REDUCED / NOMINAL EFFICIENCY (%)	96,0-92,0
HEATING VOLUME (m ³)	159
CONSUMPTION (kg/h)	0,7-1,6
CHIMNEY DIAMETER (mm)	80
HEIGHT (mm)	926
WIDTH (mm)	493
DEPTH (mm)	589
WEIGHT (kg)	82
MAXIMUM NOISE LEVEL (dB)	48,2

COLOURS



WHITE BORDEAUX BLACK



CSTB
for better construction



E100 K2 COLLECTION 8 KW

A+

HOPPER AUTONOMY MIN-MAX (h)	9,6 - 22,1
HOPPER CAPACITY (kg)	15
REDUCED / NOMINAL POWER (kW)	3,1-7,0
REDUCED / NOMINAL EFFICIENCY (%)	96,0-92,0
HEATING VOLUME (m ³)	159
CONSUMPTION (kg/h)	0,7-1,6
CHIMNEY DIAMETER (mm)	80
HEIGHT (mm)	926
WIDTH (mm)	562
DEPTH (mm)	587
WEIGHT (kg)	81
MAXIMUM NOISE LEVEL (dB)	48,2

COLOURS



WHITE BORDEAUX GREY BLACK



CSTB
for better construction



EVEREST ROUND

A+

HOPPER AUTONOMY MIN-MAX (h)	8,8 - 25,0
HOPPER CAPACITY (kg)	18
REDUCED / NOMINAL POWER (kW)	3,0 - 8,8
REDUCED / NOMINAL EFFICIENCY (%)	96,0 - 91,0
HEATING VOLUME (m ³)	200
CONSUMPTION (kg/h)	0,7-2
CHIMNEY DIAMETER (mm)	80
HEIGHT (mm)	1072
WIDTH (mm)	500
DEPTH (mm)	561
WEIGHT (kg)	92
MAXIMUM NOISE LEVEL (dB)	48,2

COLOURS



WHITE BORDEAUX BLACK



CSTB
for better construction



EVEREST ROUND Glass Door

A+

HOPPER AUTONOMY MIN-MAX (h)	8,8 - 25,0
HOPPER CAPACITY (kg)	18
REDUCED / NOMINAL POWER (kW)	3,0 - 8,8
REDUCED / NOMINAL EFFICIENCY (%)	96,0 - 91,0
HEATING VOLUME (m ³)	200
CONSUMPTION (kg/h)	0,7-2
CHIMNEY DIAMETER (mm)	80
HEIGHT (mm)	1072
WIDTH (mm)	500
DEPTH (mm)	561
WEIGHT (kg)	92
MAXIMUM NOISE LEVEL (dB)	48,2

COLOURS



WHITE BORDEAUX BLACK



OPTIONALS AIRTIGHT STOVES (PELLETS)



Description

Ducted Ventilation Kit Everest R.



Description

Wi-Fi Kit + (Columbus)



Description

Wi-Fi Kit

PELLETS LOCAL HEATING

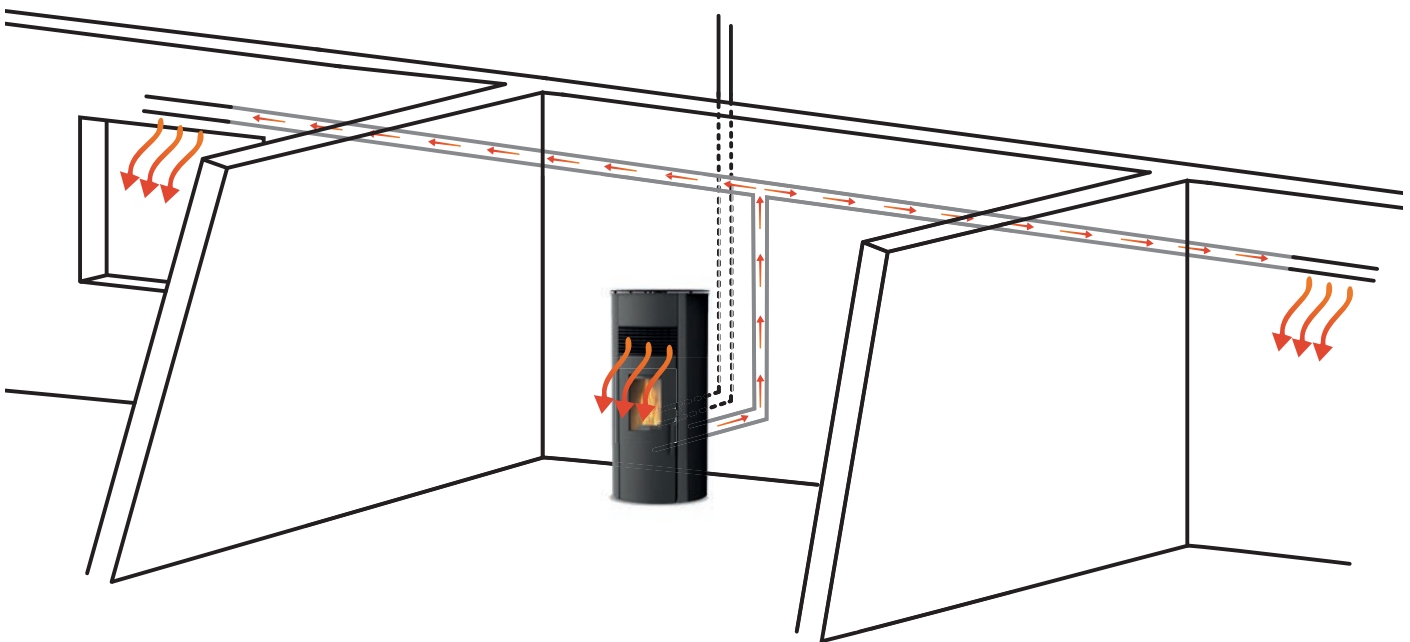
STOVES WITH OPTIONAL PIPED VENTILATION



Pellet stoves are an excellent option if you are looking for a local heating solution that can heat more than one room, in an economical and practical way. The stove is installed in one room of the house and the distribution to the other rooms is done through hot air tubes, allowing a quick and homogeneous heating. You can find in this catalog several aesthetics for this type of equipment, from hall stoves to round stoves or more conventional models.

When installing hot air distribution pipes, it is advisable to place the equipment in a position that allows the hot air to diffuse through the place where it is inserted, but also in a direction that helps it leave the room.

The piping hot air outlet grilles should not be too far from the equipment in order to minimize efficiency losses.



STOVES WITH OPTIONAL PIPED VENTILATION

NEVADA 7 KW

A+



HOPPER AUTONOMY MIN-MAX (h)	9,4 - 22,0
HOPPER CAPACITY (kg)	15
REDUCED / NOMINAL POWER (kW)	3,1-7,0
REDUCED / NOMINAL EFFICIENCY (%)	95,8-91,7
HEATING VOLUME (m ³)	164
CONSUMPTION (kg/h)	0,7-1,6
CHIMNEY DIAMETER (mm)	80
HEIGHT (mm)	1127
WIDTH (mm)	985
DEPTH (mm)	301
WEIGHT (kg)	137
MAXIMUM NOISE LEVEL (dB)	49,9

COLOURS



WHITE BORDEAUX GREY BLACK

SPECIAL COLOURS



DARK CORTEN

**NEVADA 7 KW
Glass Door**

A+



HOPPER AUTONOMY MIN-MAX (h)	9,4 - 22,0
HOPPER CAPACITY (kg)	15
REDUCED / NOMINAL POWER (kW)	3,1-7,0
REDUCED / NOMINAL EFFICIENCY (%)	95,8-91,7
HEATING VOLUME (m ³)	164
CONSUMPTION (kg/h)	0,7-1,6
CHIMNEY DIAMETER (mm)	80
HEIGHT (mm)	1127
WIDTH (mm)	985
DEPTH (mm)	301
WEIGHT (kg)	137
MAXIMUM NOISE LEVEL (dB)	49,9

COLOURS



WHITE BORDEAUX GREY BLACK

SPECIAL COLOURS



DARK CORTEN

AMAZON 9 KW

A+



HOPPER AUTONOMY MIN-MAX (h)	8,8 - 25,0
HOPPER CAPACITY (kg)	18
REDUCED / NOMINAL POWER (kW)	3,0 - 8,8
REDUCED / NOMINAL EFFICIENCY (%)	96,0 - 91,0
HEATING VOLUME (m ³)	200
CONSUMPTION (kg/h)	0,7-2
CHIMNEY DIAMETER (mm)	80
HEIGHT (mm)	1072
WIDTH (mm)	500
DEPTH (mm)	561
WEIGHT (kg)	92
MAXIMUM NOISE LEVEL (dB)	48,2

COLOURS



WHITE BORDEAUX BLACK



**AMAZON 9 KW
Glass Door**

A+



HOPPER AUTONOMY MIN-MAX (h)	8,8 - 25,0
HOPPER CAPACITY (kg)	18
REDUCED / NOMINAL POWER (kW)	3,0 - 8,8
REDUCED / NOMINAL EFFICIENCY (%)	96,0 - 91,0
HEATING VOLUME (m ³)	200
CONSUMPTION (kg/h)	0,7-2
CHIMNEY DIAMETER (mm)	80
HEIGHT (mm)	1072
WIDTH (mm)	500
DEPTH (mm)	561
WEIGHT (kg)	92
MAXIMUM NOISE LEVEL (dB)	48,2

COLOURS



WHITE BORDEAUX BLACK



**HIMALAIA
COLLECTION 12 KW**

A+



HOPPER AUTONOMY MIN-MAX (h)	11,1 - 33,3
HOPPER CAPACITY (kg)	30
REDUCED / NOMINAL POWER (kW)	3,9-11,9
REDUCED / NOMINAL EFFICIENCY (%)	96,0-92,0
HEATING VOLUME (m ³)	269
CONSUMPTION (kg/h)	0,9-2,7
CHIMNEY DIAMETER (mm)	80
HEIGHT (mm)	1156
WIDTH (mm)	550
DEPTH (mm)	596
WEIGHT (kg)	143
MAXIMUM NOISE LEVEL (dB)	61

COLOURS



WHITE BLACK



**HIMALAIA
COLLECTION 12 KW - Glass Door**

A+



HOPPER AUTONOMY MIN-MAX (h)	11,1 - 33,3
HOPPER CAPACITY (kg)	30
REDUCED / NOMINAL POWER (kW)	3,9-11,9
REDUCED / NOMINAL EFFICIENCY (%)	96,0-92,0
HEATING VOLUME (m ³)	269
CONSUMPTION (kg/h)	0,9-2,7
CHIMNEY DIAMETER (mm)	80
HEIGHT (mm)	1156
WIDTH (mm)	550
DEPTH (mm)	596
WEIGHT (kg)	143
MAXIMUM NOISE LEVEL (dB)	61

COLOURS



WHITE BLACK



PELLETS LOCAL HEATING

STOVES WITH OPTIONAL PIPED VENTILATION



K2 COLLECTION 12 KW A+

HOPPER AUTONOMY MIN-MAX (h)	11,1 - 33,3
HOPPER CAPACITY (kg)	30
REDUCED / NOMINAL POWER (kW)	3,9-11,9
REDUCED / NOMINAL EFFICIENCY (%)	96,0-92,0
HEATING VOLUME (m ³)	269
CONSUMPTION (kg/h)	0,9-2,7
CHIMNEY DIAMETER (mm)	80
HEIGHT (mm)	1156
WIDTH (mm)	600
DEPTH (mm)	596
WEIGHT (kg)	143
MAXIMUM NOISE LEVEL (dB)	61

COLOURS



WHITE BORDEAUX



K2 COLLECTION 12 KW - Glass Door A+

HOPPER AUTONOMY MIN-MAX (h)	11,1 - 33,3
HOPPER CAPACITY (kg)	30
REDUCED / NOMINAL POWER (kW)	3,9-11,9
REDUCED / NOMINAL EFFICIENCY (%)	96,0-92,0
HEATING VOLUME (m ³)	269
CONSUMPTION (kg/h)	0,9-2,7
CHIMNEY DIAMETER (mm)	80
HEIGHT (mm)	1156
WIDTH (mm)	600
DEPTH (mm)	596
WEIGHT (kg)	143
MAXIMUM NOISE LEVEL (dB)	61

COLOURS



WHITE BORDEAUX



FUJI COLLECTION 12 KW A+

HOPPER AUTONOMY MIN-MAX (h)	11,1 - 33,3
HOPPER CAPACITY (kg)	30
REDUCED / NOMINAL POWER (kW)	3,9-11,9
REDUCED / NOMINAL EFFICIENCY (%)	96,0-92,0
HEATING VOLUME (m ³)	269
CONSUMPTION (kg/h)	0,9-2,7
CHIMNEY DIAMETER (mm)	80
HEIGHT (mm)	1156
WIDTH (mm)	550
DEPTH (mm)	596
WEIGHT (kg)	145
MAXIMUM NOISE LEVEL (dB)	61

COLOURS



WHITE

SPECIAL COLOURS



OAK



FUJI COLLECTION 12 KW Glass Door A+

HOPPER AUTONOMY MIN-MAX (h)	11,1 - 33,3
HOPPER CAPACITY (kg)	30
REDUCED / NOMINAL POWER (kW)	3,9-11,9
REDUCED / NOMINAL EFFICIENCY (%)	96,0-92,0
HEATING VOLUME (m ³)	269
CONSUMPTION (kg/h)	0,9-2,7
CHIMNEY DIAMETER (mm)	80
HEIGHT (mm)	1156
WIDTH (mm)	550
DEPTH (mm)	596
WEIGHT (kg)	145
MAXIMUM NOISE LEVEL (dB)	61

COLOURS



WHITE

SPECIAL COLOURS



OAK



PINE COLLECTION 12 KW A+

HOPPER AUTONOMY MIN-MAX (h)	11,1 - 33,3
HOPPER CAPACITY (kg)	30
REDUCED / NOMINAL POWER (kW)	3,9-11,9
REDUCED / NOMINAL EFFICIENCY (%)	96,0-92,0
HEATING VOLUME (m ³)	269
CONSUMPTION (kg/h)	0,9-2,7
CHIMNEY DIAMETER (mm)	80
HEIGHT (mm)	1156
WIDTH (mm)	626
DEPTH (mm)	596
WEIGHT (kg)	152
MAXIMUM NOISE LEVEL (dB)	61

COLOURS



WHITE

SPECIAL COLOURS



OAK



PINE COLLECTION 12 KW Glass Door A+

HOPPER AUTONOMY MIN-MAX (h)	11,1 - 33,3
HOPPER CAPACITY (kg)	30
REDUCED / NOMINAL POWER (kW)	3,9-11,9
REDUCED / NOMINAL EFFICIENCY (%)	96,0-92,0
HEATING VOLUME (m ³)	269
CONSUMPTION (kg/h)	0,9-2,7
CHIMNEY DIAMETER (mm)	80
HEIGHT (mm)	1156
WIDTH (mm)	626
DEPTH (mm)	596
WEIGHT (kg)	152
MAXIMUM NOISE LEVEL (dB)	61

COLOURS



WHITE

SPECIAL COLOURS



OAK



STOVES WITH OPTIONAL PIPED VENTILATION

ASPEN COLLECTION 12 KW **A+**



HOPPER AUTONOMY MIN-MAX (h)	11,1 - 33,3
HOPPER CAPACITY (kg)	30
REDUCED / NOMINAL POWER (kW)	3,9-11,9
REDUCED / NOMINAL EFFICIENCY (%)	96,0-92,0
HEATING VOLUME (m ³)	269
CONSUMPTION (kg/h)	0,9-2,7
CHIMNEY DIAMETER (mm)	80
HEIGHT (mm)	1156
WIDTH (mm)	530
DEPTH (mm)	596
WEIGHT (kg)	152
MAXIMUM NOISE LEVEL (dB)	61



COLOURS

SPECIAL COLOURS



BLACK AND WHITE



BLACK



ASPEN COLLECTION 12 KW **A+** Glass Door



HOPPER AUTONOMY MIN-MAX (h)	11,1 - 33,3
HOPPER CAPACITY (kg)	30
REDUCED / NOMINAL POWER (kW)	3,9-11,9
REDUCED / NOMINAL EFFICIENCY (%)	96,0-92,0
HEATING VOLUME (m ³)	269
CONSUMPTION (kg/h)	0,9-2,7
CHIMNEY DIAMETER (mm)	80
HEIGHT (mm)	1156
WIDTH (mm)	530
DEPTH (mm)	596
WEIGHT (kg)	152
MAXIMUM NOISE LEVEL (dB)	61



COLOURS

SPECIAL COLOURS



BLACK AND WHITE



BLACK



OPTIONALS STOVES (PELLETS)



Description

K600/12 kW ducted ventilation kit
* kit includes fan with a flow rate 135m³/h, connection wiring and rear air outlet
** this equipment allows the use of 2 additional fans



Description

Nevada Wall Suspension Kit



Description

Nevada Ventilation Kit



Description

Amazon Piped Ventilation Kit



Description

Wi-Fi Kit + (Columbus)



Description

Wi-Fi Kit

WOOD LOCAL HEATING

WHAT ARE THE ADVANTAGES OF CHOOSING A SOLZAIMA WOOD SOLUTION TO HEAT YOUR HOME?

In local heating solutions, you will tend to heat one room, although you have the option of ducting the air to adjoining rooms in some equipment.

Firewood is the most economical fuel on the market and also the one with the least price volatility in recent years. It is a clean and sustainable source of energy, since it is essential to promote an effective forest management as a way to preserve and boost an important national resource. There are many advantages in purchasing a wood stove or a wood burning stove as opposed to a traditional fireplace, starting with safety, as it has a closed system that is easier to control. Reduced consumption is another major advantage. In a 5kW Solzaima stove with 75% efficiency, you will consume about 1,6 kg of firewood per hour to heat a 35 m² room.

Typically, in a conventional fireplace, your efficiency will be about 10%, which means that you will consume about 12kg of firewood to produce the same 5 kW that you use to heat the 35 m² room.



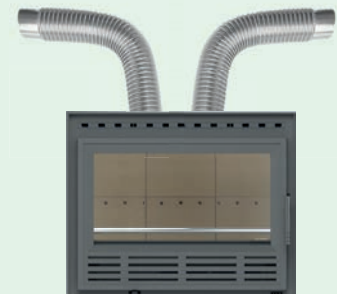
HIGH TEMPERATURE RESISTANCE

Our products have a vermiculite interior, a material consisting of a large percentage of silica and air, resistant to high temperatures, which increases the equipment's durability and combustion efficiency.



BEAUTIFUL FLAME

All the equipments allow you to regulate the primary and secondary air using a single handle, to ensure an efficient flame with the greatest possible comfort.



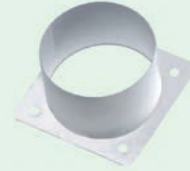
HEATING SEVERAL ROOMS

Some models allow you to duct the hot air to more than one room, in an economical and practical way.



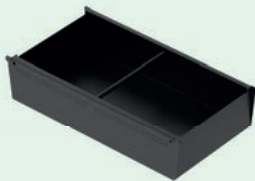
FULL GLASS DOOR

The wood-burning local heating stoves have versions with an integral glass door, so that not a second of flame is lost.



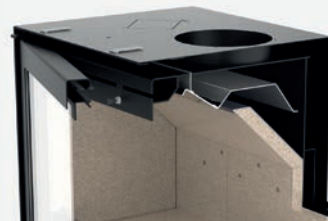
COMBUSTION OPTIMIZATION

This kit collects air from outside the home, optimizing the oxygen input for combustion.



EASY CLEANING

The ashes from the combustion process are all accumulated in the greys basket, making the cleaning process easier.



EFFICIENT HEAT TRANSFER

The double baffle allows retaining the gases in the combustion chamber for a longer time, increasing the efficiency of heat transfer. It has an automatic smoke damper that allows the fumes to pass directly to the outlet when refueling.



SAFE SYSTEM

The fireguard on the stoves ensures that the wood does not touch the glass if it comes loose during combustion.



GLASS ALWAYS CLEAN

The air circulation in an exclusive channel that directs the air towards the glass allows it to remain clean at all times during the operation of the device.

WOOD LOCAL HEATING

MONOBLOCS (WOOD)



The new monoblocs with a vertical sliding door, also known as a guillotine door, or horizontal door are a stylish and functional alternative. They feature particularly large flame viewing areas so that you never miss a second of the fire's dazzling glow. The vertical door features a counterweight, so it can remain open at any point along its path, and can be opened from the right or left side using the accompanying key, as illustrated in the following images.



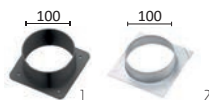
The key used to open and close the vertical door also serves to tilt the door forward at a 45° angle, to facilitate cleaning the inside of the glass. The glass is ceramic thermo-resistant, withstanding temperatures up to 750°C in continuous use. Both models allow the application of a 4-sided frame with 4,4 cm or 7,4 cm.

INCLUDED AS STANDARD



Description

Table Trevi 700 / 850 / 1100



Description

External air intake connection kit (Ø 100) (1)

Hot air outlet kit (Ø 100) (2)



Description

Ventilation kit 430 m³/h 0Pa



Description

Set of 4 transport wheels

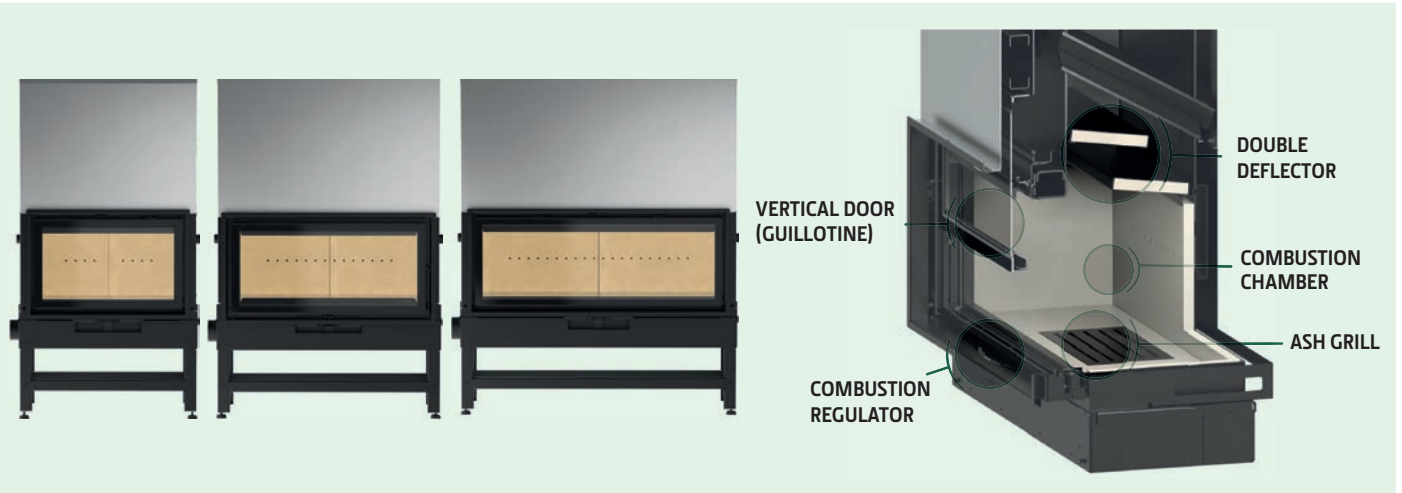


Description

Set of 4 carrying handles

OPTIONALS

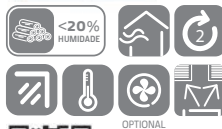
MONOBLOCS (WOOD)



TREVI ECO 700 VERTICAL DOOR

A+

OUTPUT POWER (kW)	13,2
EFFICIENCY (%)	83,0
HEATING VOLUME (m ³)	300
CONSUMPTION (kg/h)	3,9
CHIMNEY DIAMETER (mm)	200
HEIGHT (mm)	1482
WIDTH (mm)	807
DEPTH (mm)	564
WEIGHT (kg)	262
LOG SIZE (mm)	400



TREVI ECO 700 HORIZONTAL DOOR

A+

OUTPUT POWER (kW)	13,2
EFFICIENCY (%)	83,0
HEATING VOLUME (m ³)	300
CONSUMPTION (kg/h)	3,9
CHIMNEY DIAMETER (mm)	200
HEIGHT (mm)	1482
WIDTH (mm)	807
DEPTH (mm)	564
WEIGHT (kg)	262
LOG SIZE (mm)	400



TREVI ECO 850 VERTICAL DOOR

A+

OUTPUT POWER (kW)	14,5
EFFICIENCY (%)	81,7
HEATING VOLUME (m ³)	330
CONSUMPTION (kg/h)	4,6
CHIMNEY DIAMETER (mm)	200
HEIGHT (mm)	1482
WIDTH (mm)	1046
DEPTH (mm)	564
WEIGHT (kg)	288
LOG SIZE (mm)	500



TREVI ECO 850 HORIZONTAL DOOR

A+

OUTPUT POWER (kW)	14,5
EFFICIENCY (%)	81,7
HEATING VOLUME (m ³)	330
CONSUMPTION (kg/h)	4,6
CHIMNEY DIAMETER (mm)	200
HEIGHT (mm)	1482
WIDTH (mm)	1046
DEPTH (mm)	564
WEIGHT (kg)	288
LOG SIZE (mm)	500

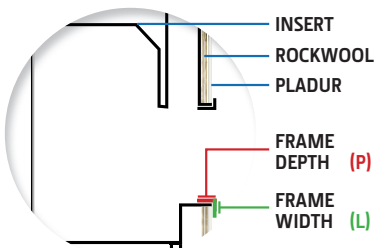


TREVI ECO 1100 VERTICAL DOOR

A+

OUTPUT POWER (kW)	16,2
EFFICIENCY (%)	80,4
HEATING VOLUME (m ³)	368
CONSUMPTION (kg/h)	5,4
CHIMNEY DIAMETER (mm)	250
HEIGHT (mm)	1482
WIDTH (mm)	1296
DEPTH (mm)	564
WEIGHT (kg)	332
LOG SIZE (mm)	700

OPTIONAL FRAMES FOR VERTICAL DOOR MONOBLOCS (WOOD)



L=4,4 cm; P=4 cm or P=6 cm

Frame 4S Black with 4.4 cm wide. You can choose to purchase the frame with 4 cm or 6 cm depth.



L=7,4 cm; P=4 cm or P=6 cm

Frame 4S Black with 7.4 cm width. You can choose to purchase the frame with 4 cm or 6 cm depth.

WOOD LOCAL HEATING

VENTILATED INSERTS - GLASS DOOR (WOOD)



HERA ECO 60

OUTPUT POWER (kW)	8,0
EFFICIENCY (%)	81,4
HEATING VOLUME (m ³)	182
CONSUMPTION (kg/h)	2,4
CHIMNEY DIAMETER (mm)	150
HEIGHT (mm)	550
WIDTH (mm)	590
DEPTH (mm)	470
WEIGHT (kg)	88
LOG SIZE (mm)	400

A+



LOKI ECO 70

OUTPUT POWER (kW)	9,3
EFFICIENCY (%)	81,1
HEATING VOLUME (m ³)	211
CONSUMPTION (kg/h)	2,8
CHIMNEY DIAMETER (mm)	180
HEIGHT (mm)	550
WIDTH (mm)	690
DEPTH (mm)	470
WEIGHT (kg)	109
LOG SIZE (mm)	500

A+



JUNO ECO 80

OUTPUT POWER (kW)	10,6
EFFICIENCY (%)	80,7
HEATING VOLUME (m ³)	241
CONSUMPTION (kg/h)	3,1
CHIMNEY DIAMETER (mm)	200
HEIGHT (mm)	550
WIDTH (mm)	790
DEPTH (mm)	470
WEIGHT (kg)	122
LOG SIZE (mm)	500

A+



JUNO ECO 90

OUTPUT POWER (kW)	11,9
EFFICIENCY (%)	80,7
HEATING VOLUME (m ³)	270
CONSUMPTION (kg/h)	3,5
CHIMNEY DIAMETER (mm)	200
HEIGHT (mm)	550
WIDTH (mm)	890
DEPTH (mm)	470
WEIGHT (kg)	124
LOG SIZE (mm)	500

A+



NON VENTILATED INSERTS - GLASS DOOR (WOOD)



URANO VITRO ECO 60

OUTPUT POWER (kW)	8,0
EFFICIENCY (%)	80,5
HEATING VOLUME (m ³)	182
CONSUMPTION (kg/h)	2,4
CHIMNEY DIAMETER (mm)	150
HEIGHT (mm)	510
WIDTH (mm)	590
DEPTH (mm)	470
WEIGHT (kg)	86
LOG SIZE (mm)	300

A+



URANO VITRO ECO 70

OUTPUT POWER (kW)	9,4
EFFICIENCY (%)	80,9
HEATING VOLUME (m ³)	214
CONSUMPTION (kg/h)	2,8
CHIMNEY DIAMETER (mm)	180
HEIGHT (mm)	570
WIDTH (mm)	690
DEPTH (mm)	470
WEIGHT (kg)	104
LOG SIZE (mm)	400

A+



IACO VITRO ECO 80

OUTPUT POWER (kW)	10,7
EFFICIENCY (%)	81,2
HEATING VOLUME (m ³)	243
CONSUMPTION (kg/h)	3,3
CHIMNEY DIAMETER (mm)	200
HEIGHT (mm)	640
WIDTH (mm)	790
DEPTH (mm)	470
WEIGHT (kg)	122
LOG SIZE (mm)	500

A+



IACO VITRO ECO 90

OUTPUT POWER (kW)	12,1
EFFICIENCY (%)	81,5
HEATING VOLUME (m ³)	275
CONSUMPTION (kg/h)	3,7
CHIMNEY DIAMETER (mm)	200
HEIGHT (mm)	710
WIDTH (mm)	890
DEPTH (mm)	470
WEIGHT (kg)	136
LOG SIZE (mm)	500

A+



GLASS DOOR INSERTS OPTIONALS



Frame 35 4,4cm Black



Frame 35 7,4cm Black



Frame 45 4,4cm Black



Frame 45 7,4cm Black



Four-party frame 4,4cm Black

VENTILATED INSERTS - STEEL DOOR (WOOD)



SIENA ECO 60

OUTPUT POWER (kW)	8,0
EFFICIENCY (%)	81,4
HEATING VOLUME (m ³)	182
CONSUMPTION (kg/h)	2,4
CHIMNEY DIAMETER (mm)	150
HEIGHT (mm)	550
WIDTH (mm)	590
DEPTH (mm)	470
WEIGHT (kg)	85
LOG SIZE (mm)	400

A+



ORION ECO 70

OUTPUT POWER (kW)	9,3
EFFICIENCY (%)	81,1
HEATING VOLUME (m ³)	211
CONSUMPTION (kg/h)	2,8
CHIMNEY DIAMETER (mm)	180
HEIGHT (mm)	550
WIDTH (mm)	690
DEPTH (mm)	470
WEIGHT (kg)	105
LOG SIZE (mm)	500

A+



RIALTO ECO 80

OUTPUT POWER (kW)	10,6
EFFICIENCY (%)	80,7
HEATING VOLUME (m ³)	241
CONSUMPTION (kg/h)	3,1
CHIMNEY DIAMETER (mm)	200
HEIGHT (mm)	550
WIDTH (mm)	790
DEPTH (mm)	470
WEIGHT (kg)	116
LOG SIZE (mm)	500

A+



RIALTO ECO 90

OUTPUT POWER (kW)	11,9
EFFICIENCY (%)	80,7
HEATING VOLUME (m ³)	270
CONSUMPTION (kg/h)	3,5
CHIMNEY DIAMETER (mm)	200
HEIGHT (mm)	550
WIDTH (mm)	890
DEPTH (mm)	470
WEIGHT (kg)	124
LOG SIZE (mm)	500

A+



NON VENTILATED INSERTS - STEEL DOOR (WOOD)



URANO ECO 60

OUTPUT POWER (kW)	8,0
EFFICIENCY (%)	80,5
HEATING VOLUME (m ³)	182
CONSUMPTION (kg/h)	2,4
CHIMNEY DIAMETER (mm)	150
HEIGHT (mm)	510
WIDTH (mm)	590
DEPTH (mm)	470
WEIGHT (kg)	84
LOG SIZE (mm)	300

A+



URANO ECO 70

OUTPUT POWER (kW)	9,4
EFFICIENCY (%)	80,9
HEATING VOLUME (m ³)	214
CONSUMPTION (kg/h)	2,8
CHIMNEY DIAMETER (mm)	180
HEIGHT (mm)	570
WIDTH (mm)	690
DEPTH (mm)	470
WEIGHT (kg)	105
LOG SIZE (mm)	400

A+



IACO ECO 80

OUTPUT POWER (kW)	10,7
EFFICIENCY (%)	81,2
HEATING VOLUME (m ³)	243
CONSUMPTION (kg/h)	3,3
CHIMNEY DIAMETER (mm)	200
HEIGHT (mm)	640
WIDTH (mm)	790
DEPTH (mm)	470
WEIGHT (kg)	120
LOG SIZE (mm)	500

A+



IACO ECO 90

OUTPUT POWER (kW)	12,1
EFFICIENCY (%)	81,5
HEATING VOLUME (m ³)	275
CONSUMPTION (kg/h)	3,7
CHIMNEY DIAMETER (mm)	200
HEIGHT (mm)	710
WIDTH (mm)	890
DEPTH (mm)	470
WEIGHT (kg)	133
LOG SIZE (mm)	500

A+



STEEL DOOR INSERTS OPTIONALS



Frame 3S 4,4cm Grey



Frame 3S 7,4cm Grey



Frame 4S 4,4cm Grey



Frame 4S 7,4cm Grey



Four-party frame 4,4cm Grey

WOOD LOCAL HEATING

CAST IRON FRONT INSERTS (WOOD)



Cast models have a front damper that allows air to be directed into other rooms.



VÉNUS ECO 70

OUTPUT POWER (kW)	9,3
EFFICIENCY (%)	81,1
HEATING VOLUME (m ³)	211
CONSUMPTION (kg/h)	2,8
CHIMNEY DIAMETER (mm)	180
HEIGHT (mm)	570
WIDTH (mm)	700
DEPTH (mm)	490
WEIGHT (kg)	119
LOG SIZE (mm)	500

A+

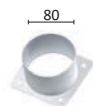


STAR ECO 60

OUTPUT POWER (kW)	8,0
EFFICIENCY (%)	81,4
HEATING VOLUME (m ³)	182
CONSUMPTION (kg/h)	2,4
CHIMNEY DIAMETER (mm)	150
HEIGHT (mm)	570
WIDTH (mm)	600
DEPTH (mm)	490
WEIGHT (kg)	107
LOG SIZE (mm)	400

A+

CASTIRON INSERTS OPTIONALS (WOOD)



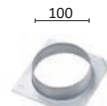
Description

External air intake connection kit (Ø 80)
Applicable to models 60



Description

External air intake connection kit (Ø 100)
Applicable to models 70, 80 and 90



Description

Hot air outlet kit (Ø 100)

STOVES (WOOD)



All wood-burning stoves for local heating have a specific deflector to direct the ashes towards the drawer, to make cleaning your equipment easier. They have a double deflector: one in sheet metal and the other in vermiculite, making the equipment more efficient. The air circulation inside, contributes to the glass always being clean during its operation.

K4 Eco

A+



OUTPUT POWER (kW)	7,3
EFFICIENCY (%)	81,0
HEATING VOLUME (m ³)	166
CONSUMPTION (kg/h)	2,0
CHIMNEY DIAMETER (mm)	150
HEIGHT (mm)	967
WIDTH (mm)	84,8
DEPTH (mm)	678
WEIGHT (kg)	137
LOG SIZE (mm)	300



OPTIONAL

M1 Eco

A+



OUTPUT POWER (kW)	7,3
EFFICIENCY (%)	81,0
HEATING VOLUME (m ³)	166
CONSUMPTION (kg/h)	2,0
CHIMNEY DIAMETER (mm)	150
HEIGHT (mm)	966
WIDTH (mm)	554
DEPTH (mm)	516
WEIGHT (kg)	113
LOG SIZE (mm)	300



OPTIONAL

M12F Eco

A+

OVEN INCLUDED



OUTPUT POWER (kW)	7,8
EFFICIENCY (%)	88,0
HEATING VOLUME (m ³)	177
CONSUMPTION (kg/h)	2,1
CHIMNEY DIAMETER (mm)	180
HEIGHT (mm)	1298
WIDTH (mm)	679
DEPTH (mm)	557
WEIGHT (kg)	166
LOG SIZE (mm)	250



M2o Eco

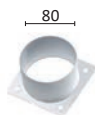
A+



OUTPUT POWER (kW)	7,5
EFFICIENCY (%)	81,2
HEATING VOLUME (m ³)	170
CONSUMPTION (kg/h)	2,0
CHIMNEY DIAMETER (mm)	150
HEIGHT (mm)	980
WIDTH (mm)	510
DEPTH (mm)	510
WEIGHT (kg)	86
LOG SIZE (mm)	200



INCLUDED AS STANDARD



Description

External air intake connection kit (Ø 80)

OPTIONALS



Description

Ventilation kit 160 m³/h 0Pa

WOOD LOCAL HEATING


STOVES (WOOD)


BACK BOX ECO




OUTPUT POWER (kW) 10,8
 EFFICIENCY (%) 83,0
 HEATING VOLUME (m³) 245
 CONSUMPTION (kg/h) 3,1
 CHIMNEY DIAMETER (mm) 200
 HEIGHT (mm) 990
 WIDTH (mm) 836
 DEPTH (mm) 534
 WEIGHT (kg) 139
 LOG SIZE (mm) 500

A+



BACK BOX ECO Glass Door



OUTPUT POWER (kW) 10,8
 EFFICIENCY (%) 83,0
 HEATING VOLUME (m³) 245
 CONSUMPTION (kg/h) 3,1
 CHIMNEY DIAMETER (mm) 200
 HEIGHT (mm) 990
 WIDTH (mm) 836
 DEPTH (mm) 534
 WEIGHT (kg) 139
 LOG SIZE (mm) 500

A+

















BACK BOX SLIM ECO



OUTPUT POWER (kW) 10,8
 EFFICIENCY (%) 83,0
 HEATING VOLUME (m³) 245
 CONSUMPTION (kg/h) 3,1
 CHIMNEY DIAMETER (mm) 200
 HEIGHT (mm) 995
 WIDTH (mm) 836
 DEPTH (mm) 534
 WEIGHT (kg) 140
 LOG SIZE (mm) 500

A+

BACK BOX SLIM ECO Glass Door



OUTPUT POWER (kW) 10,8
 EFFICIENCY (%) 83,0
 HEATING VOLUME (m³) 245
 CONSUMPTION (kg/h) 3,1
 CHIMNEY DIAMETER (mm) 200
 HEIGHT (mm) 995
 WIDTH (mm) 836
 DEPTH (mm) 534
 WEIGHT (kg) 140
 LOG SIZE (mm) 500

A+









AMBER



OUTPUT POWER (kW) 7,3
 EFFICIENCY (%) 81,0
 HEATING VOLUME (m³) 166
 CONSUMPTION (kg/h) 2,0
 CHIMNEY DIAMETER (mm) 150
 HEIGHT (mm) 1153
 WIDTH (mm) 538
 DEPTH (mm) 506
 WEIGHT (kg) 115
 LOG SIZE (mm) 300

A+










AMBER Glass Door



OUTPUT POWER (kW) 7,3
 EFFICIENCY (%) 81,0
 HEATING VOLUME (m³) 166
 CONSUMPTION (kg/h) 2,0
 CHIMNEY DIAMETER (mm) 150
 HEIGHT (mm) 1153
 WIDTH (mm) 538
 DEPTH (mm) 506
 WEIGHT (kg) 115
 LOG SIZE (mm) 300

A+










OPTIONALS BACK BOX



Description

External air intake connection kit (Ø 100)

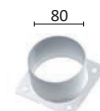
OPTIONALS AMBER



Description
Base Door



Description
Stone top



Description
External air intake connection kit (Ø 80)

STOVES (WOOD) - TEK RANGE



TEK ROUND ECO

A+

OUTPUT POWER (kW)	7,3
EFFICIENCY (%)	81,0
HEATING VOLUME (m ³)	166
CONSUMPTION (kg/h)	2,0
CHIMNEY DIAMETER (mm)	150
HEIGHT (mm)	933
WIDTH (mm)	496
DEPTH (mm)	511
WEIGHT (kg)	123
LOG SIZE (mm)	300



TEK SYSTEM ECO

A+

OUTPUT POWER (kW)	7,3
EFFICIENCY (%)	81,0
HEATING VOLUME (m ³)	166
CONSUMPTION (kg/h)	2,0
CHIMNEY DIAMETER (mm)	150
HEIGHT (mm)	910
WIDTH (mm)	477
DEPTH (mm)	498
WEIGHT (kg)	120
LOG SIZE (mm)	300



**TEK SYSTEM ECO
Wood Bottom Module**

A+

OUTPUT POWER (kW)	7,3
EFFICIENCY (%)	81,0
HEATING VOLUME (m ³)	166
CONSUMPTION (kg/h)	2,0
CHIMNEY DIAMETER (mm)	150
HEIGHT (mm)	910
WIDTH (mm)	477
DEPTH (mm)	498
WEIGHT (kg)	120
LOG SIZE (mm)	300



**TEK SYSTEM ECO
Bottom Module with Basket**

A+

OUTPUT POWER (kW)	7,3
EFFICIENCY (%)	81,0
HEATING VOLUME (m ³)	166
CONSUMPTION (kg/h)	2,0
CHIMNEY DIAMETER (mm)	150
HEIGHT (mm)	910
WIDTH (mm)	477
DEPTH (mm)	498
WEIGHT (kg)	120
LOG SIZE (mm)	300



TEK WALL ECO

A+

OUTPUT POWER (kW)	7,3
EFFICIENCY (%)	81,0
HEATING VOLUME (m ³)	166
CONSUMPTION (kg/h)	2,0
CHIMNEY DIAMETER (mm)	150
HEIGHT (mm)	1126
WIDTH (mm)	484
DEPTH (mm)	498
WEIGHT (kg)	117
LOG SIZE (mm)	300



**TEK WALL ECO
Suspension Kit**

A+

OUTPUT POWER (kW)	7,3
EFFICIENCY (%)	81,0
HEATING VOLUME (m ³)	166
CONSUMPTION (kg/h)	2,0
CHIMNEY DIAMETER (mm)	150
HEIGHT (mm)	1126
WIDTH (mm)	484
DEPTH (mm)	498
WEIGHT (kg)	117
LOG SIZE (mm)	300

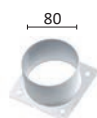


TEK LUMBER ECO

A+

OUTPUT POWER (kW)	7,3
EFFICIENCY (%)	81,0
HEATING VOLUME (m ³)	166
CONSUMPTION (kg/h)	2,0
CHIMNEY DIAMETER (mm)	150
HEIGHT (mm)	1002
WIDTH (mm)	540
DEPTH (mm)	546
WEIGHT (kg)	117
LOG SIZE (mm)	300

INCLUDED AS STANDARD



Description

External air intake connection kit (Ø 80)

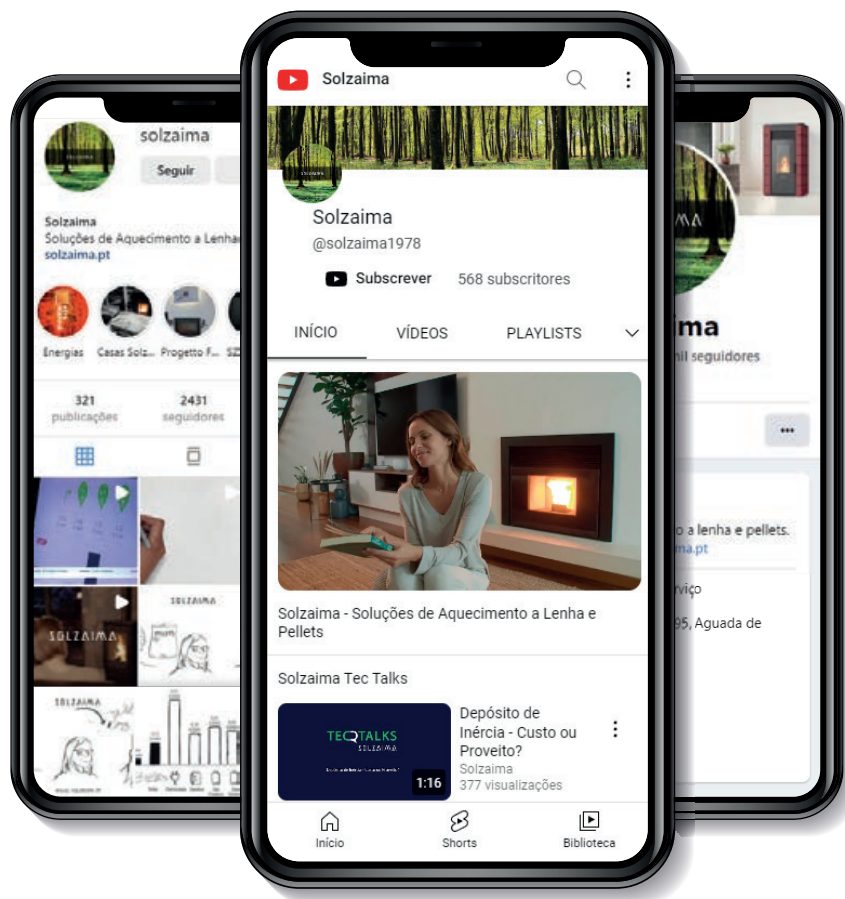
OPTIONALS



Description

Ventilation kit 160 m³/h OPa

FOLLOW US





Rua dos Outarelos, 111
3750-362 Belazaima do Chão
Agueda - Portugal

T. (+351) 234 650 650
mail@solzaima.com
www.solzaima.com



SOLZAIMA



Cofinanciado por:



UNIÃO EUROPEIA
Fundo Europeu
de Desenvolvimento Regional